

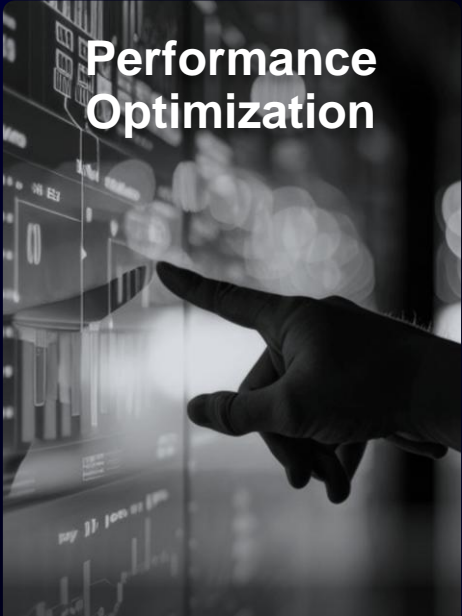
A futuristic landscape with a large planet in the sky and a large blue cross in the background. The scene is dominated by deep blues and purples, with a bright yellow and orange glow on the right side, suggesting a sunset or sunrise. The foreground shows a vast, hazy landscape with mountains and a body of water. A large, semi-transparent blue cross is positioned on the right side of the image.

OpenText Analytics Cloud Innovations

CE 23.1 – CE 25.2

AI & Analytics Cloud roadmap themes

Guiding principles for innovation



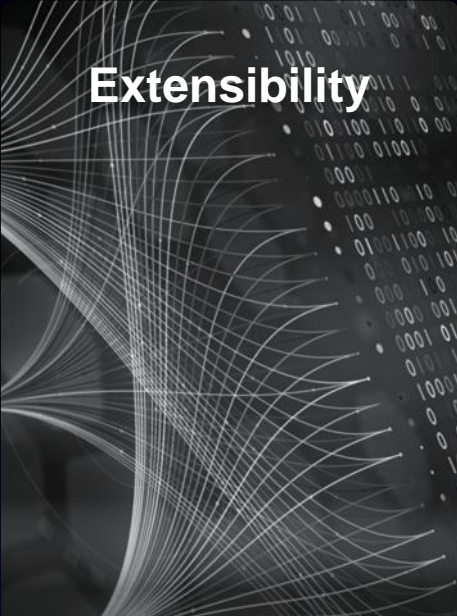
Performance Optimization

Optimize scalability and real time analytics performance




Flexible Deployment

Hybrid cloud, DBaaS, and multicloud analytics



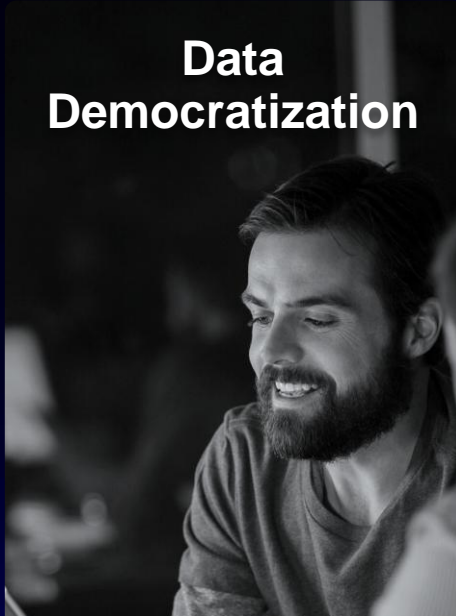
Extensibility

Seamless integration and ecosystem expansion



Security+

Advanced security, encryption & compliance

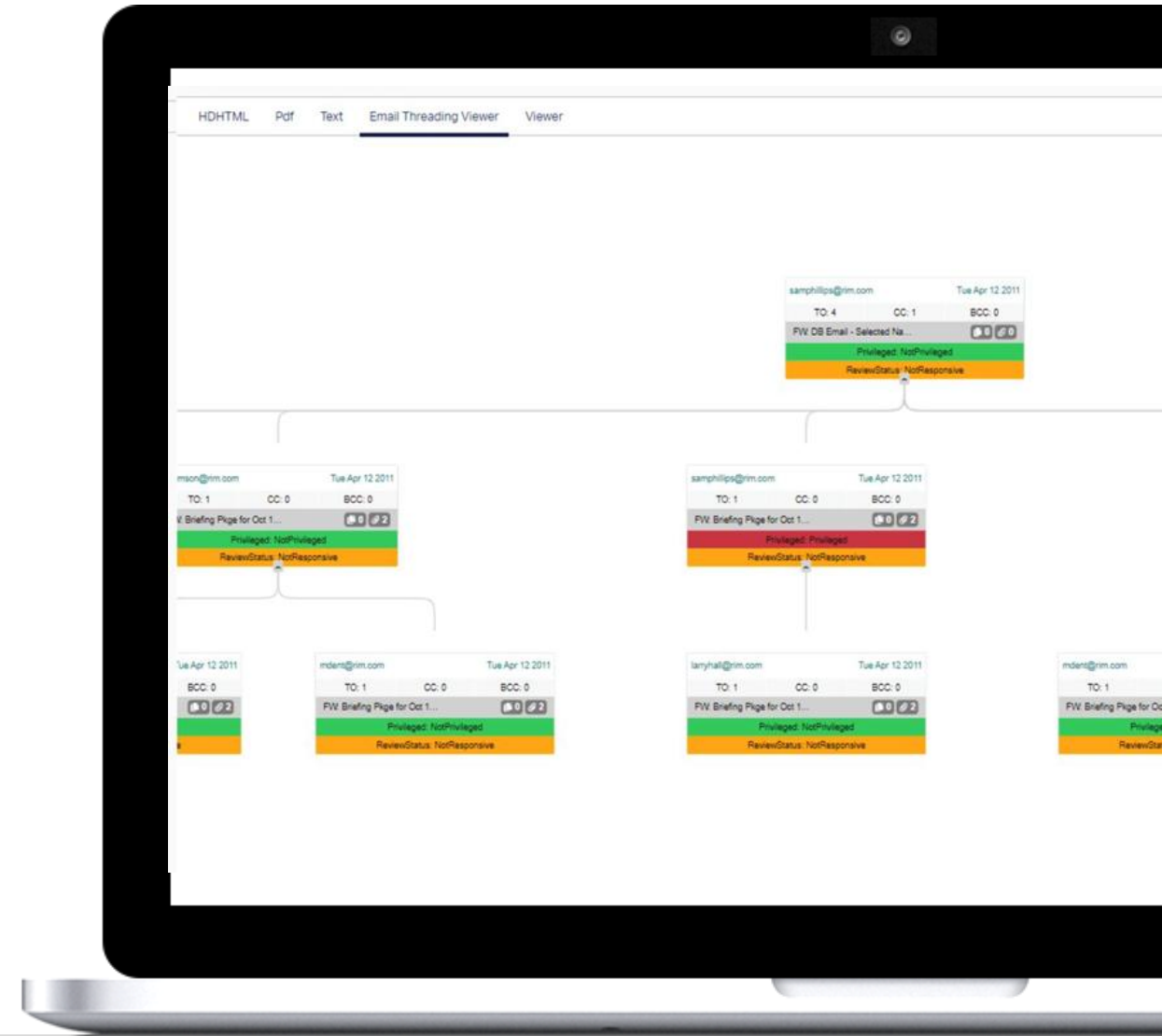


Data Democratization

AI powered analytics: LLMs, agents & GenAI reporting

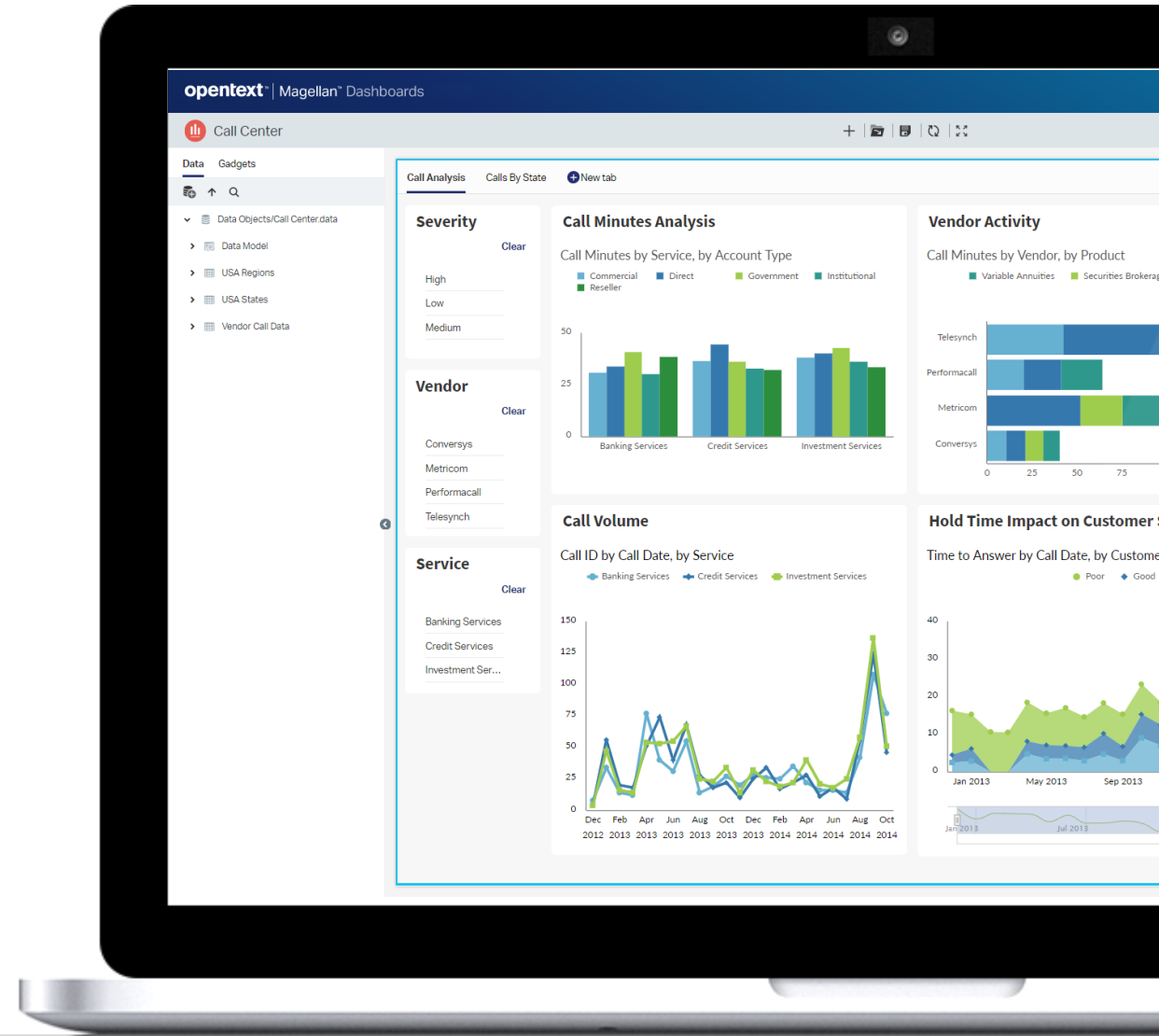
Decrease time, costs and risks of the quality control (QC) review process

- Get faster, more reliable QC of email thread coding with automated, AI-powered visualization of the entire email thread
- Realize substantial time and cost savings and better outcomes
- Quickly and reliably identify and remediate coding inconsistencies without resorting to inefficient, costly, and risky manual QC processes
- Reduce the risk of inadvertent production of privileged, confidential, or personal data



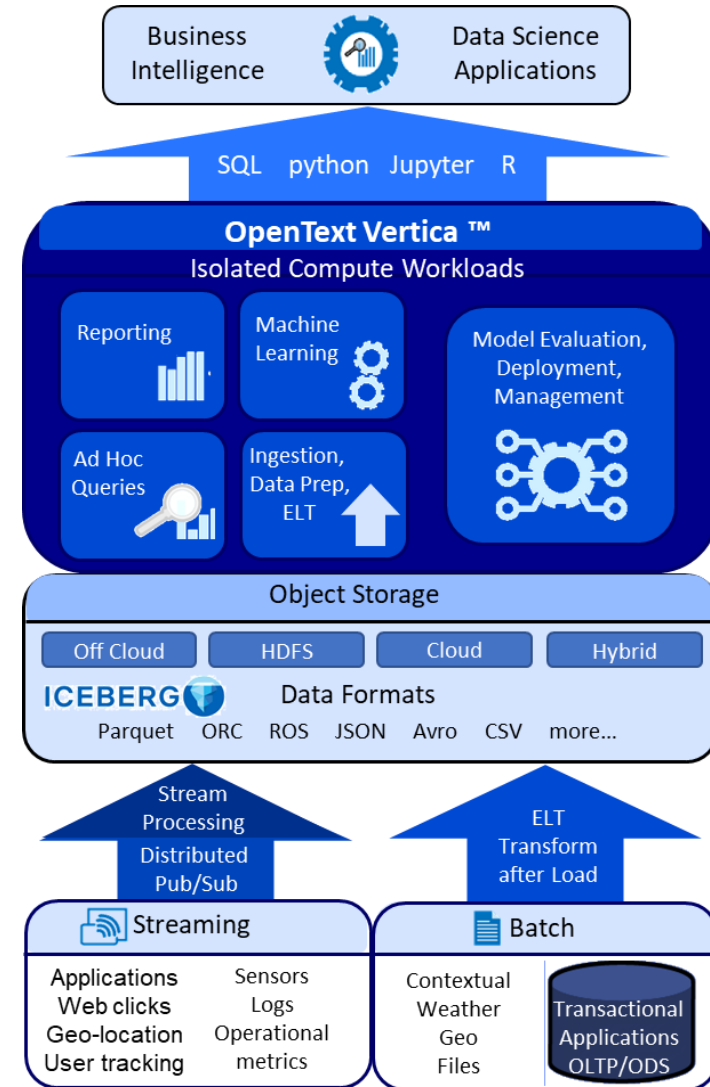
Scale high-volume BI at lightning speed

- **Increase application value** by exposing insights from exceptionally large data volumes with the embedded OpenText™ Analytics Database (Vertica) analytical database
- **Improve user satisfaction** by seamlessly embedding metrics, interactive reports, dashboards, and self-service BI capabilities
- **Get started immediately** and cost-effectively with the highly scalable multi-tenant BI cloud service



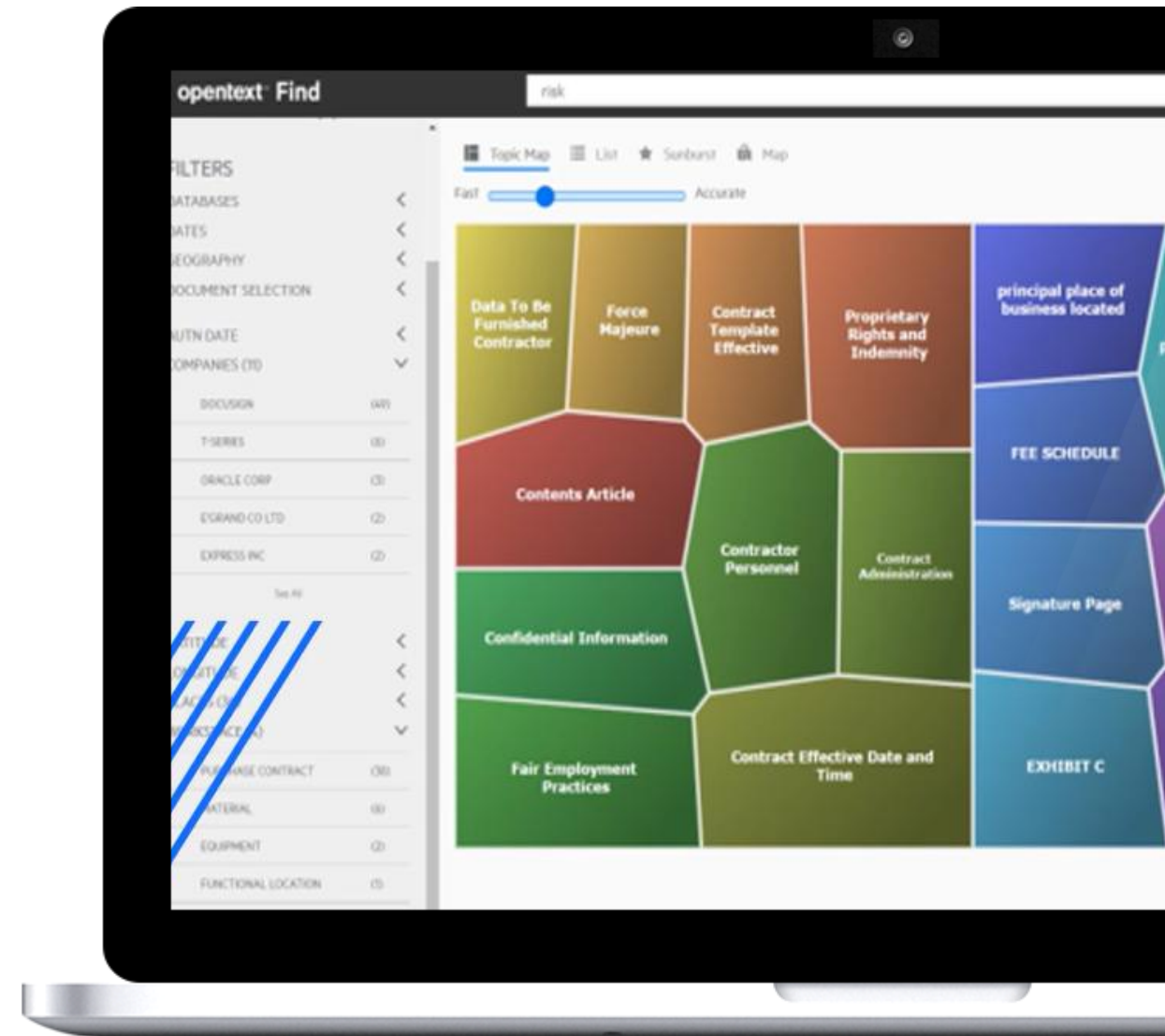
Smarter analytics for any data anywhere with integration of data warehouse and data lake

- **Understand your whole business** by analyzing ALL data
- **Go beyond BI. Predict the future** with Machine Learning/AI
- **Find data you need fast** and keep up with data changes
- **Control costs, stay green** with efficient infrastructure usage



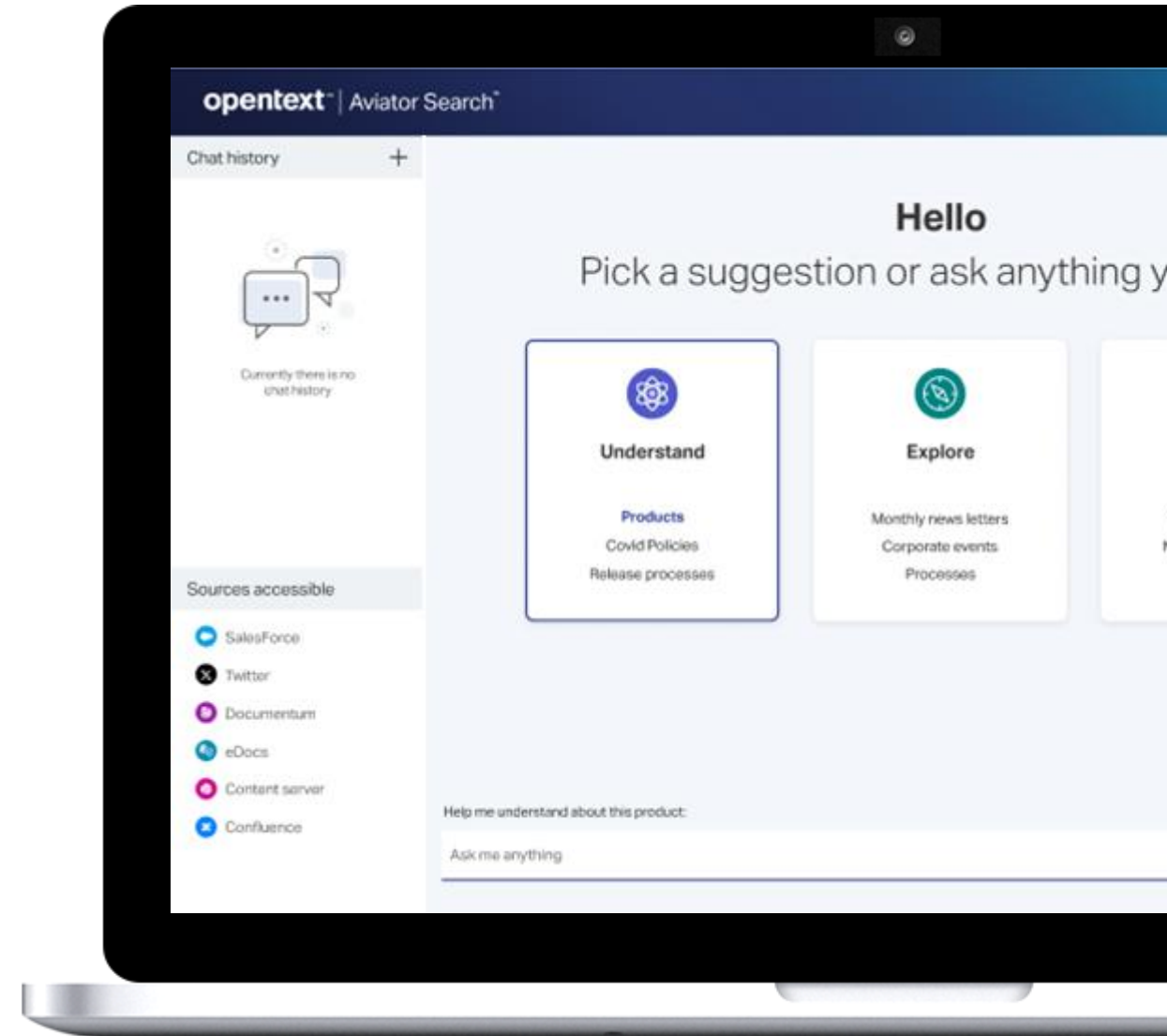
Smarter data analysis crossing the structured barrier

- **Find deeper connections across your data** with fewer restrictions on combining unstructured and structured data analysis.
- **Reveal valuable hidden data** with support for more cross-structural sources and formats in IDOL.
- **Power-up Extended ECM with IDOL**, giving users access to new types of content.



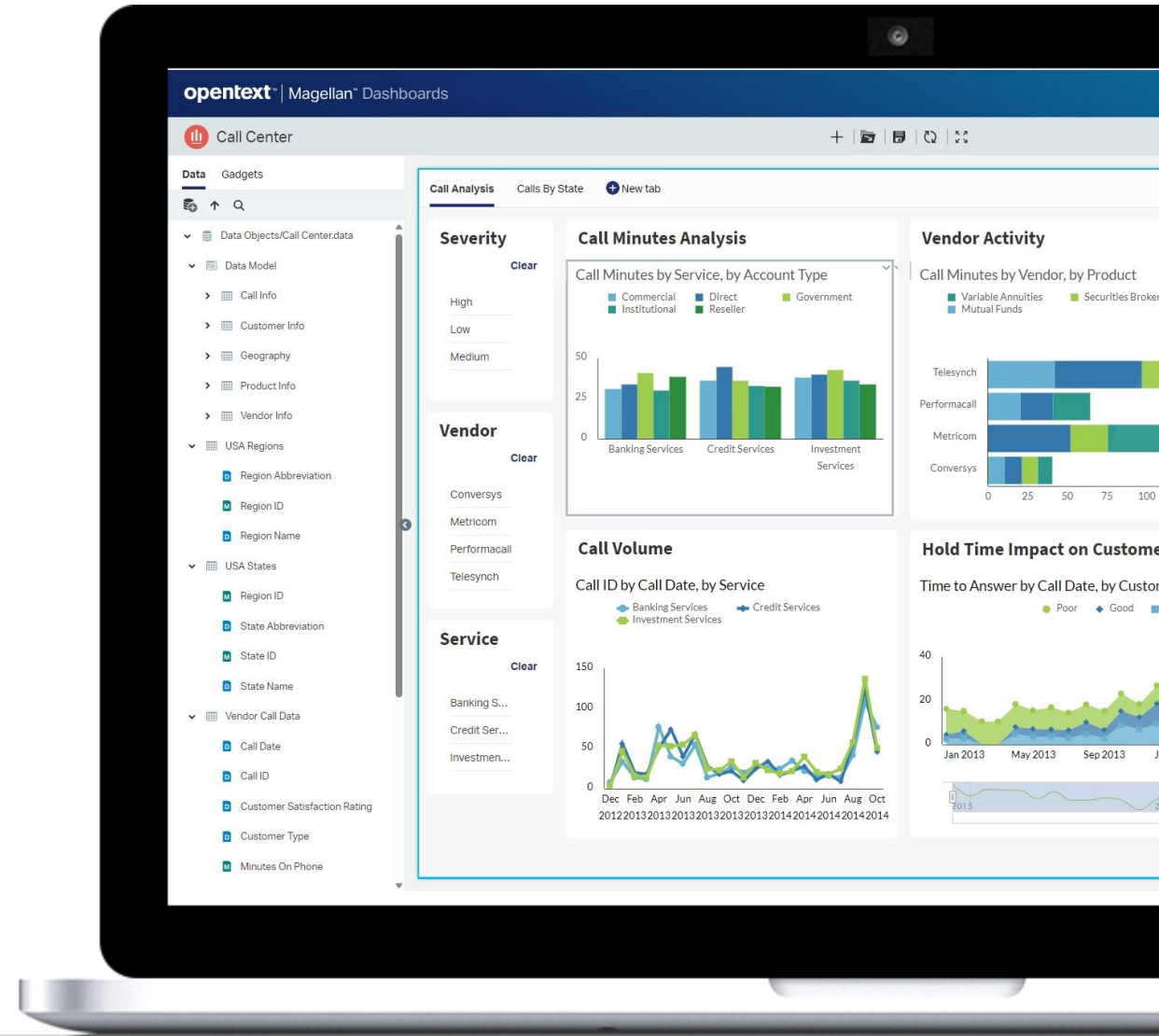
Unleash the full power of Gen AI for enterprise data search

- **Experience the value** of Generative AI, all while securing your data and identifying compliance risks, such as PII.
- **Adopt the latest in LLM** search capability including core vector database functionality to store and maintain accuracy on disparate data searches.
- **Extract and enrich searches** and discover valuable, often unknown information from all repositories and 1,900+ file formats.



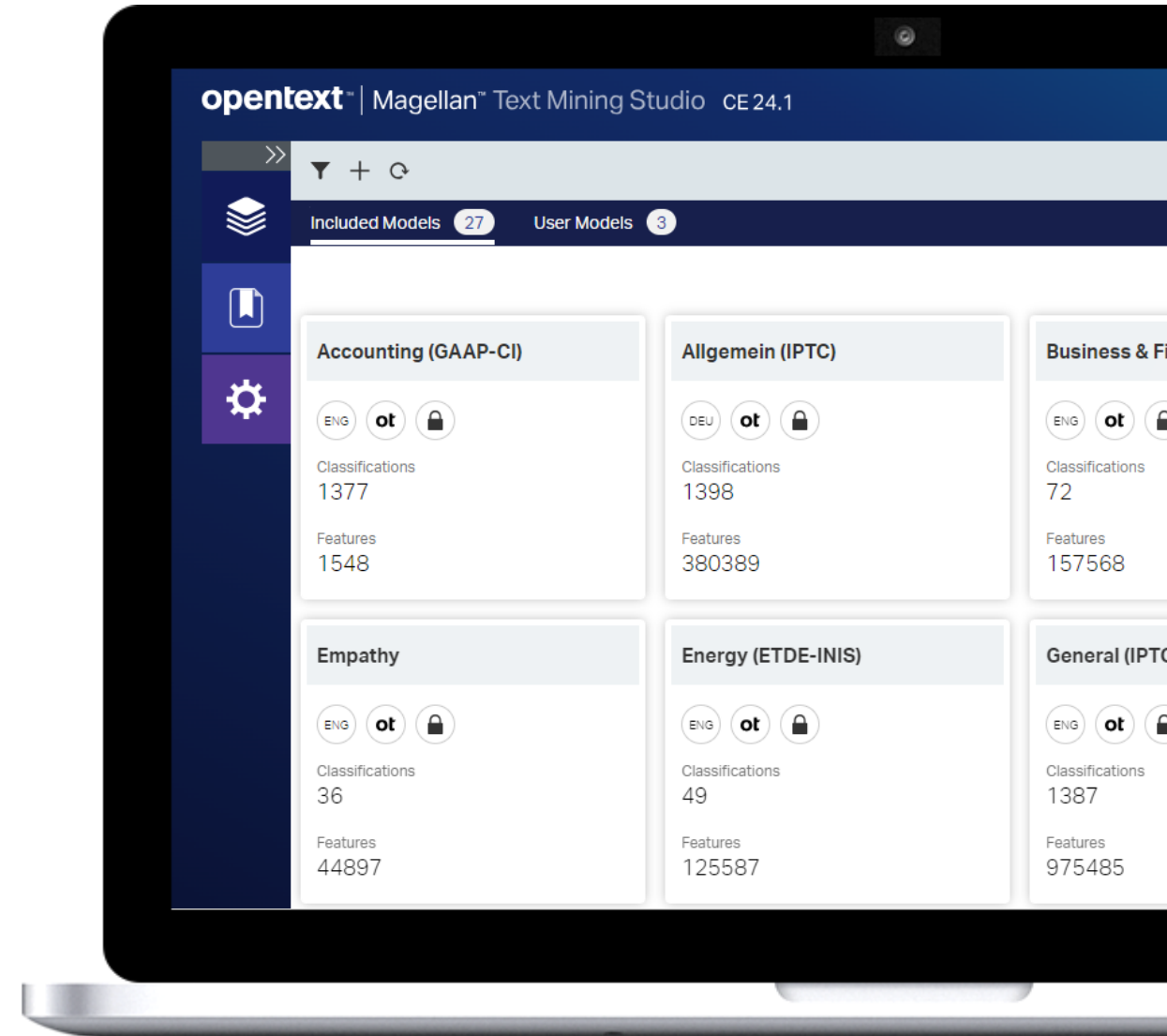
Scale high-volume, cloud BI at lightning speed

- **Scale your BI** application to new heights by exposing insights from exceptionally large data volumes with the embedded Vertica analytical database
- **Integrate with any application** using SaaS APIs for seamlessly embedding metrics, interactive reports, dashboards, and self-service BI capabilities
- **Get started immediately** and cost-effectively with the highly scalable, multi-tenant BI cloud service



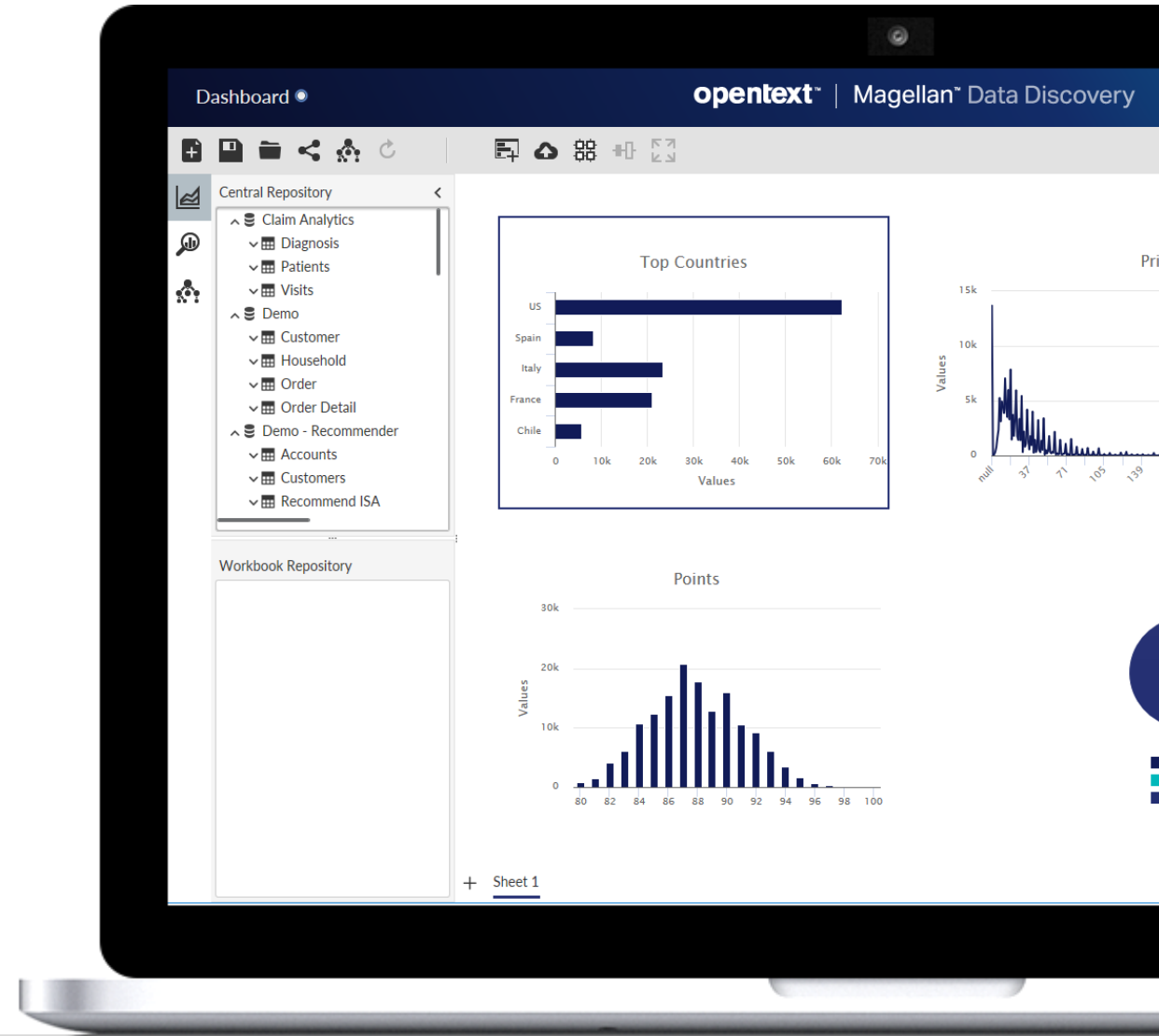
Democratizing access to AI models including LLMs

- **Beta version of new Document API** single entry point to extract content and metadata using multiple models, libraries, and processes
- **LLM for entity extraction** backend service for refactoring of external model service to support multiple LLMs including T5 models for entity extraction and question and answer creation
- **UI/UX enhancements** Single interface for out-of-the-box models and externally linked LLMs, new view of sentiment analysis results in profile testing, and better grouping for text classification models



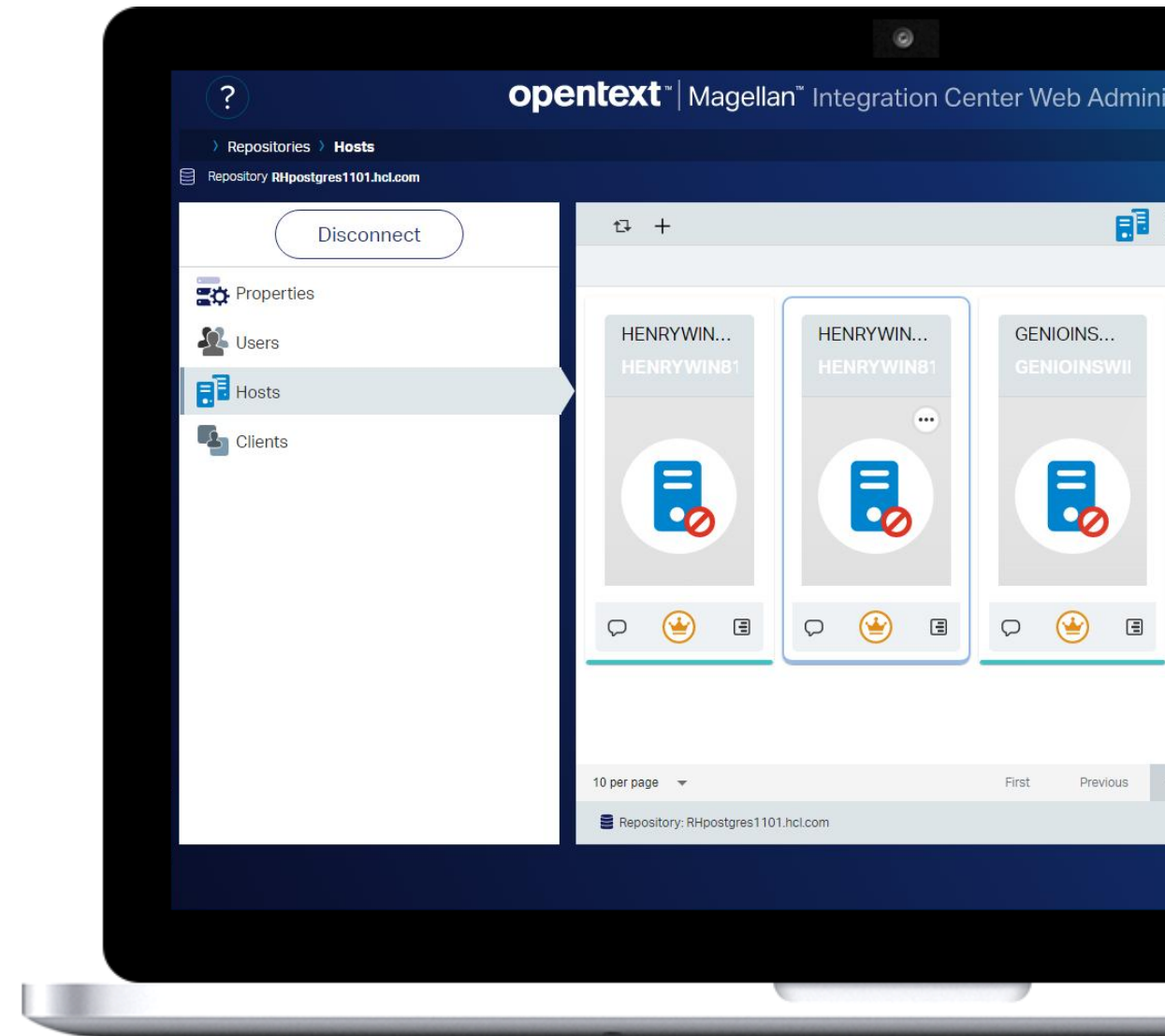
Improved automation and efficiency of analysis

- **Improved automation support** New REST API methods to execute analysis, get folder content, and export analysis making it easier to include in existing business processes.
- **New transformation commands** allow you to work with data sources, like creating indexes or table links, in the same user interface
- **Pattern based file loading** making it more efficient to ingest data based on patterns in the file name like sensor files with similar date/time stamps.



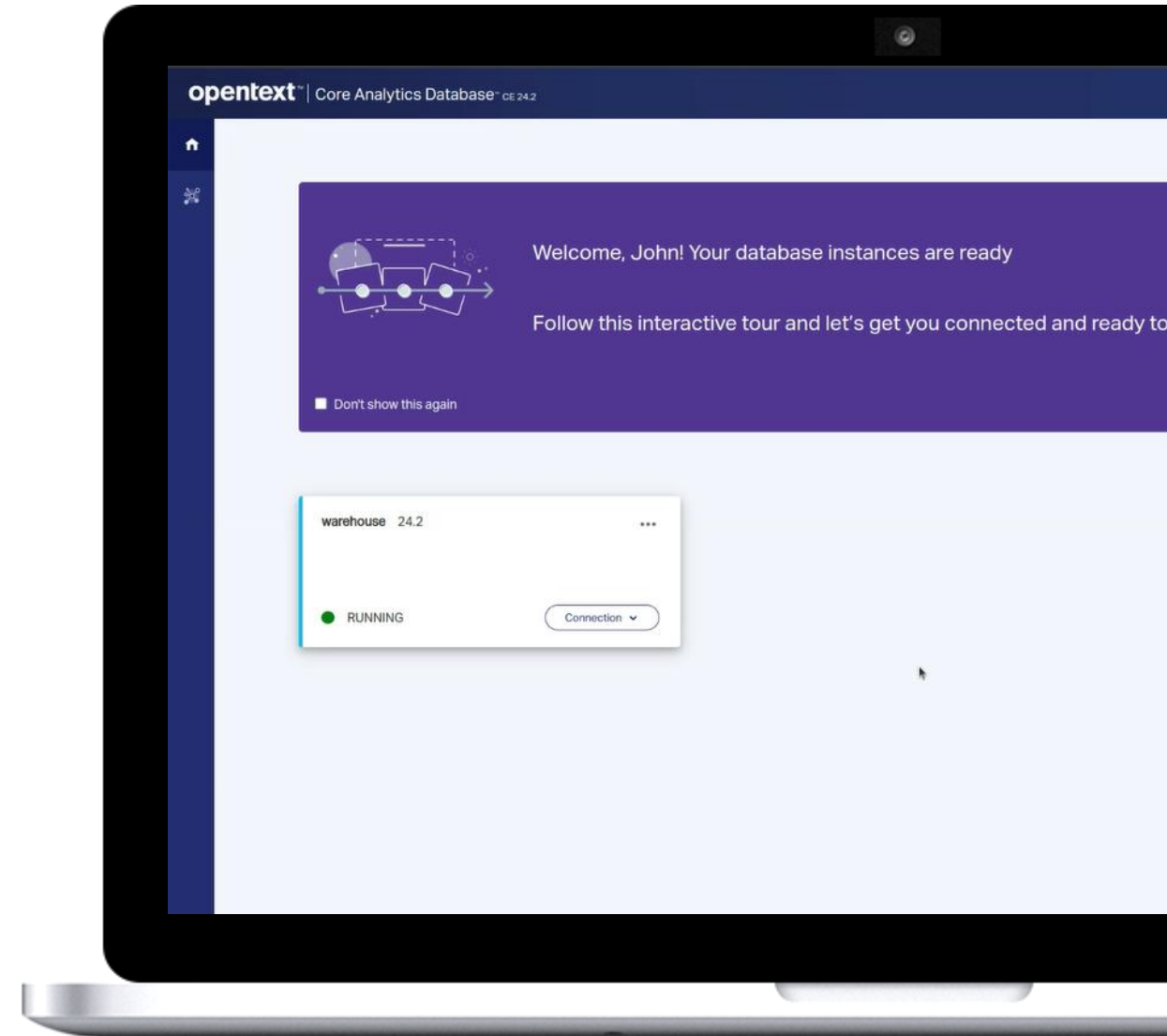
Access to more data faster

- **Read/Write BLOB storage** supports read/write operations from BLOB storage containers including HDFS and S3
- **Bulk load from Parquet files** a new Vertica driver to support the bulk load of data from Parquet files improving the speed and efficiency during the load process
- **Web UI improvements** continued improvements in the Magellan Integration Center web user interface.



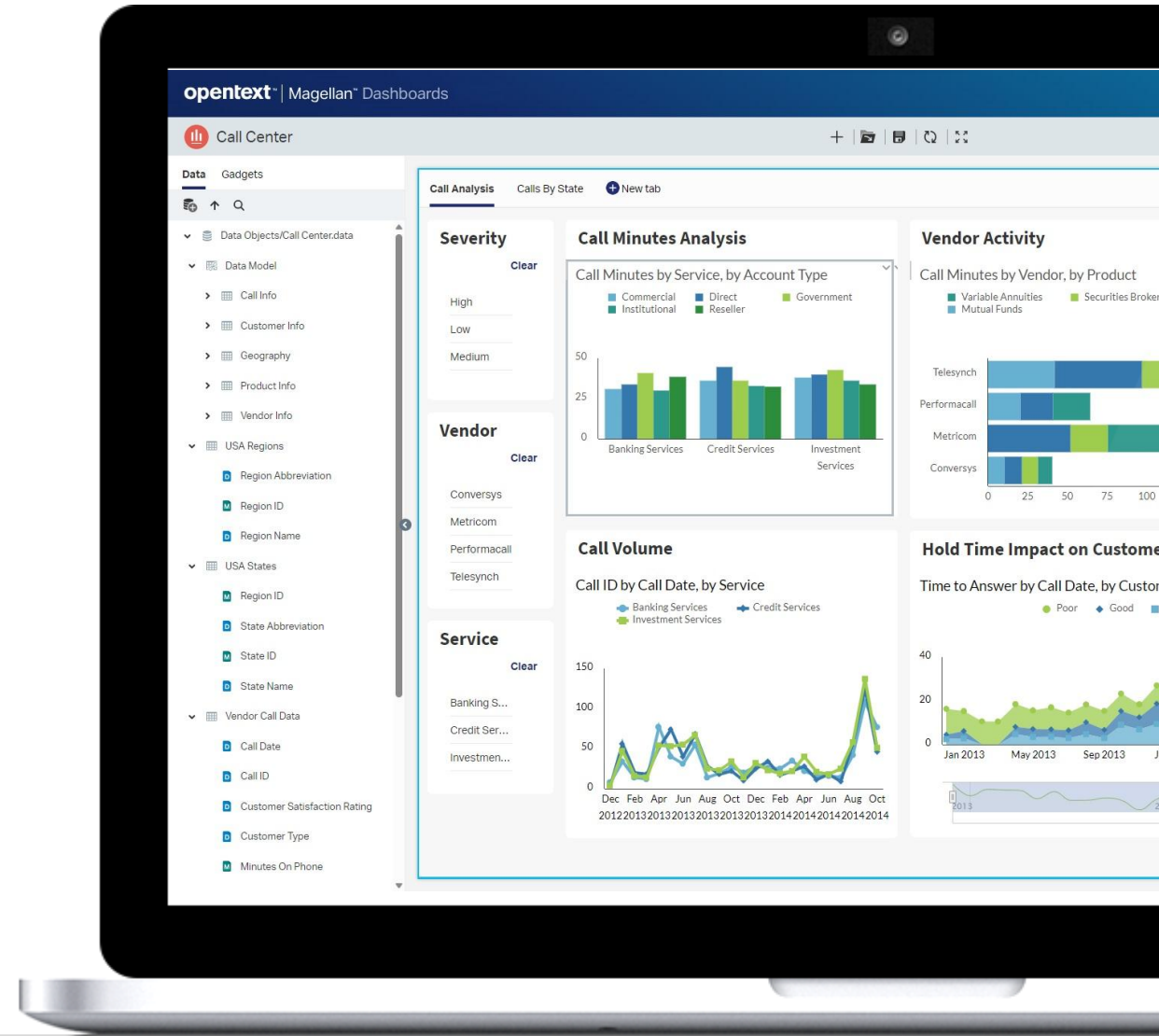
Maximize data potential and fuel AI success with an efficient data lake

- Build, experiment, and innovate with technology that **speaks your language**, Python or SQL
- Get ready, set, go!— Your **scalable data lakehouse** just a few clicks away
- **Be smart, get more for less**; 50% fewer servers, lower TCO and lower carbon footprint



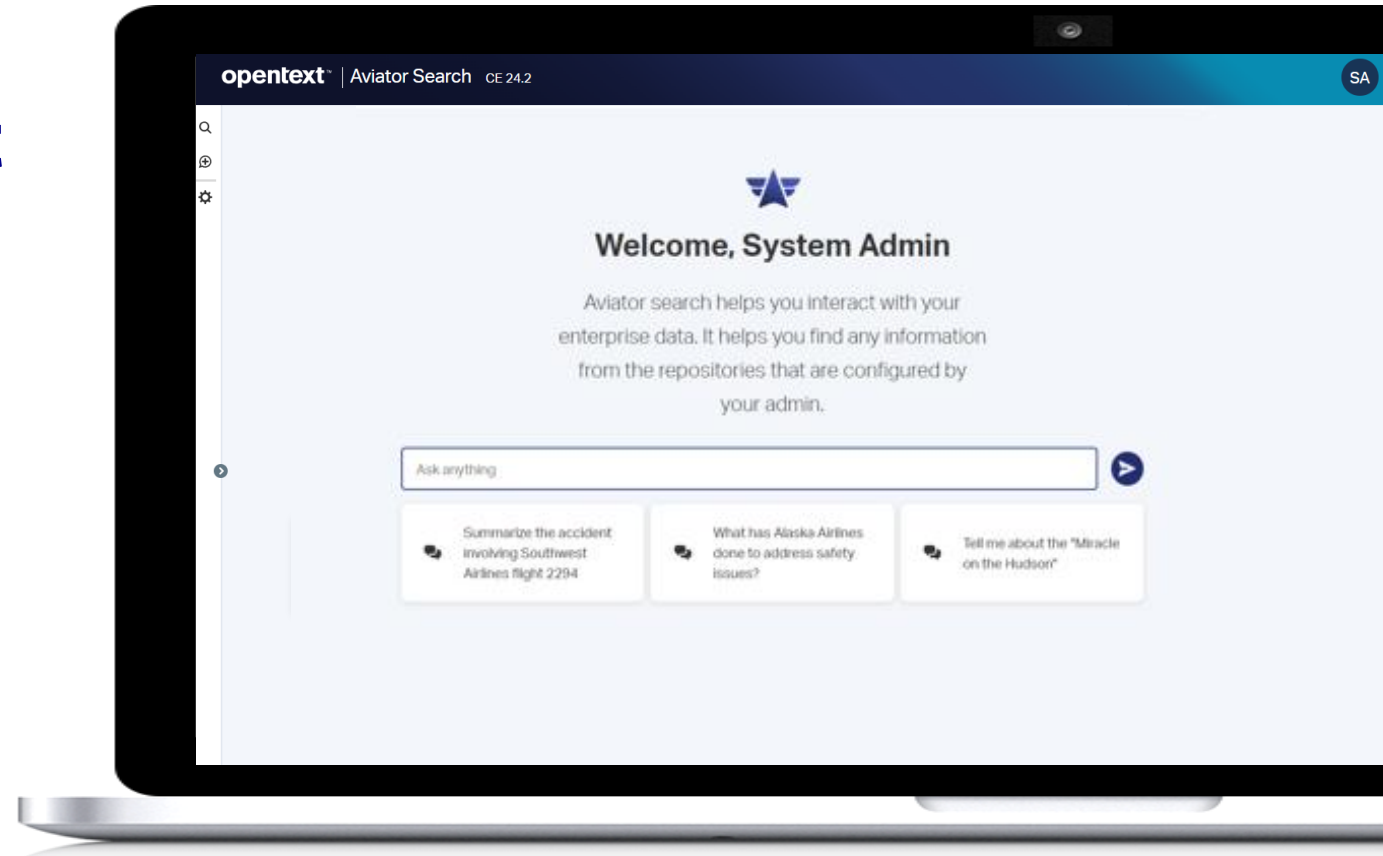
Scale high-volume, cloud-based analytics at lightning speed

- **Scale your BI** application to new heights by exposing insights from exceptionally large data volumes with the embedded Vertica analytical database
- **Integrate with any application** using SaaS APIs for seamlessly embedding metrics, interactive reports, dashboards, and self-service BI capabilities
- **Get started immediately** and cost-effectively with the highly scalable, multi-tenant BI cloud service



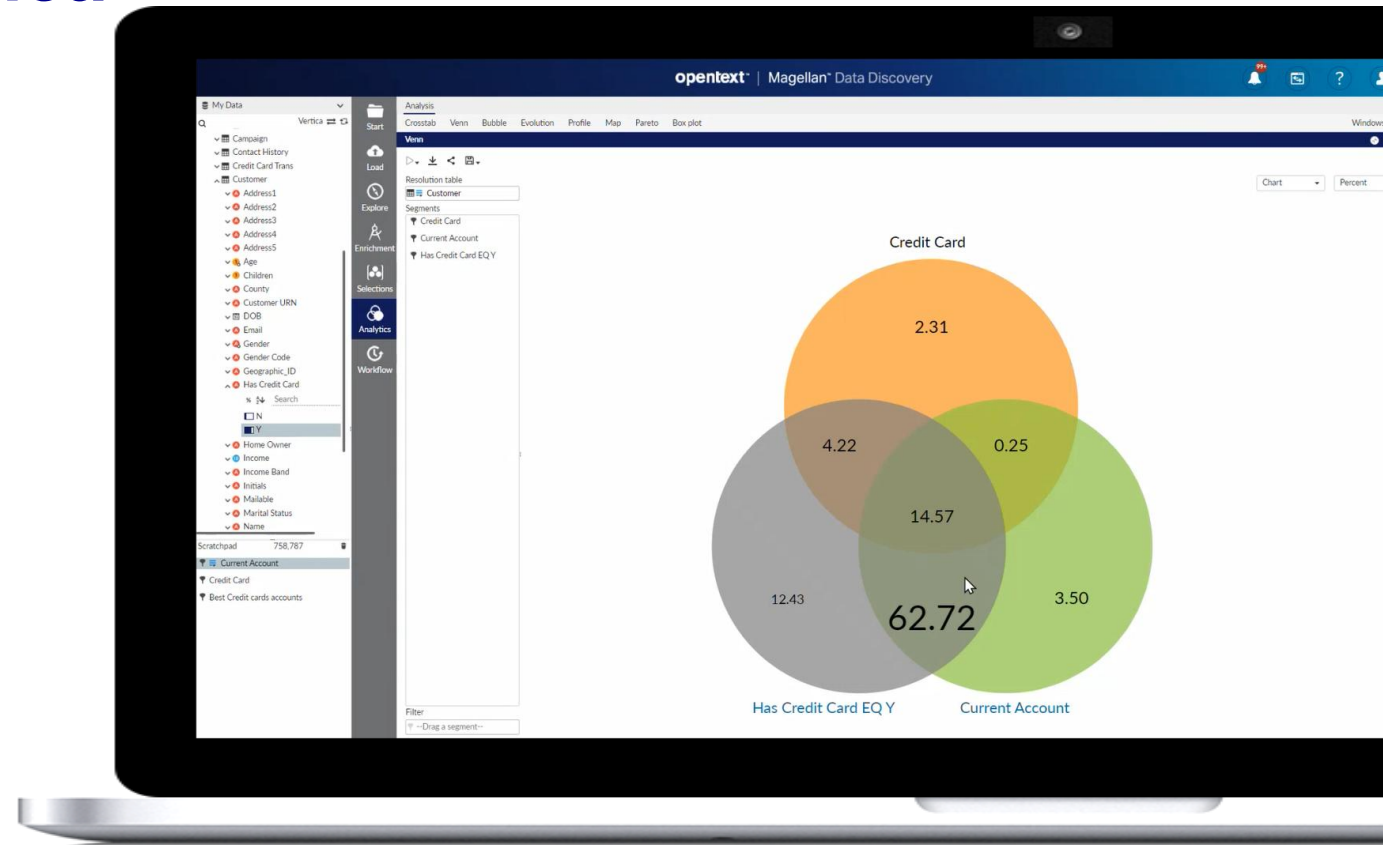
Unlock the business value in your data, not just find it

- **Gain the answers** in real time, not simply a list of locations and documents.
- **Turn users into Data Analysts**, demolish barriers: tech, training, data access
- **Unlock the value within Microsoft 365**, go beyond endless native searching



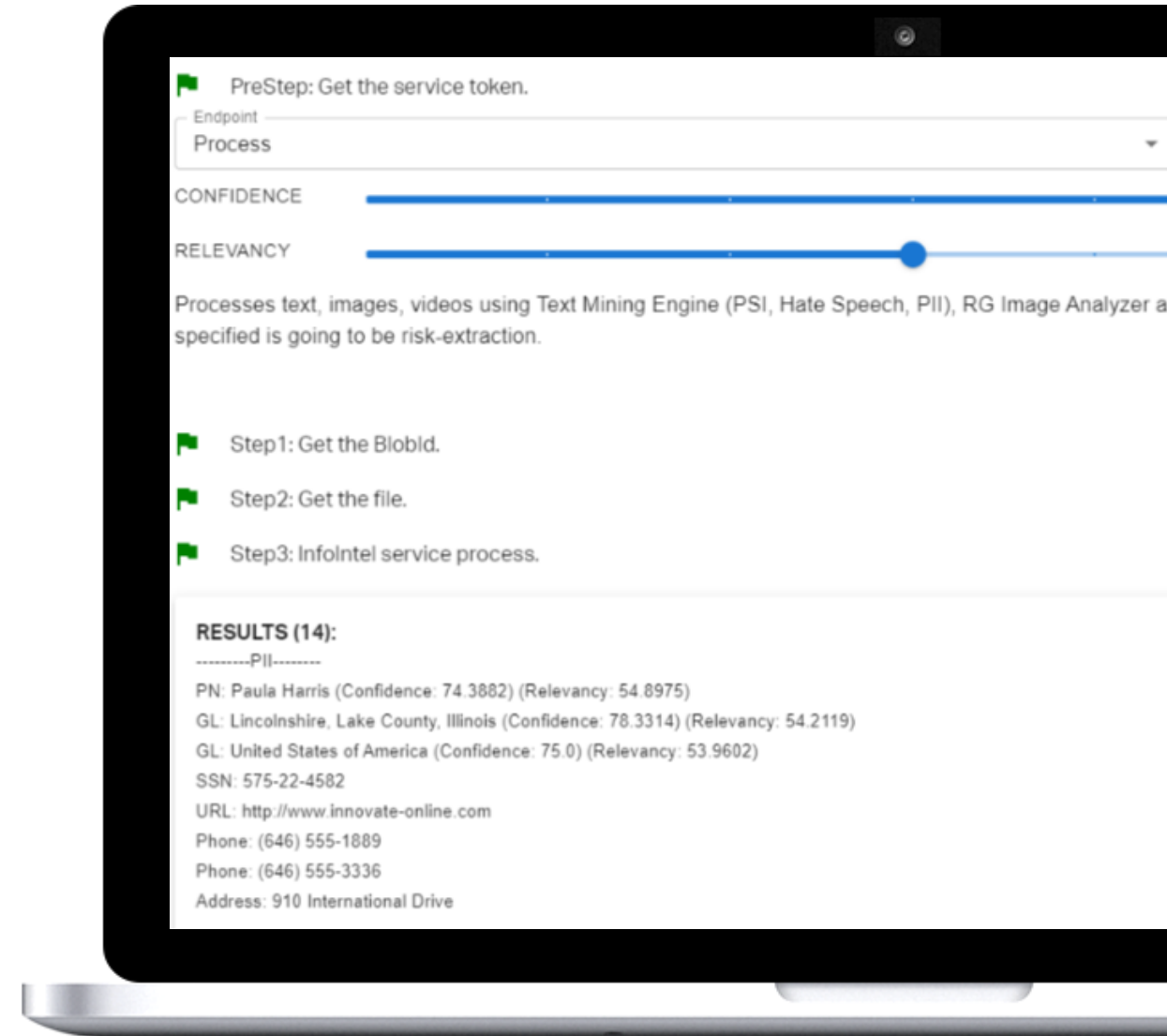
Unleash the power of your Vertica data

- **Access** and ingest data directly with your instance of Vertica
- **Blend**, transform and create new tables and fields
- **Explore** data insights with drag drop simplicity
- **Analyze** data with no special query skills or IT involvement
- **Visualize** business insights with pre-built algorithms, analysis, and smart visualizations
- **Address ad-hoc business questions** to reveal hidden relationships, patterns, profiles, and trends



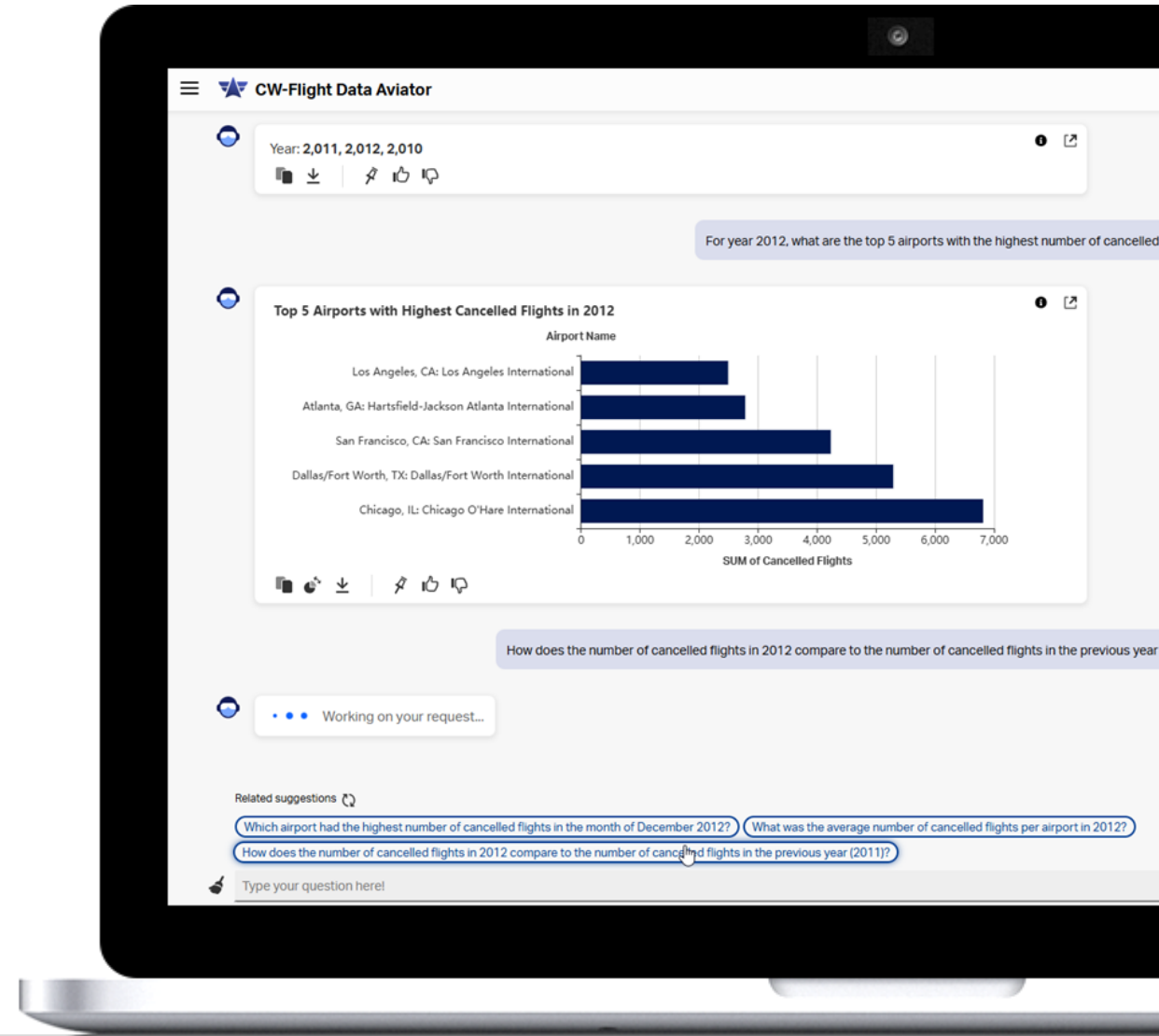
Risk, Security and Compliance - simplified

- **Control and manage** harmful, non-compliant and risky content
- **Simplify** your security and compliance requirements
- Powerful **redirecting of information** for users to control and distribute
- **One single license** for many powerful services



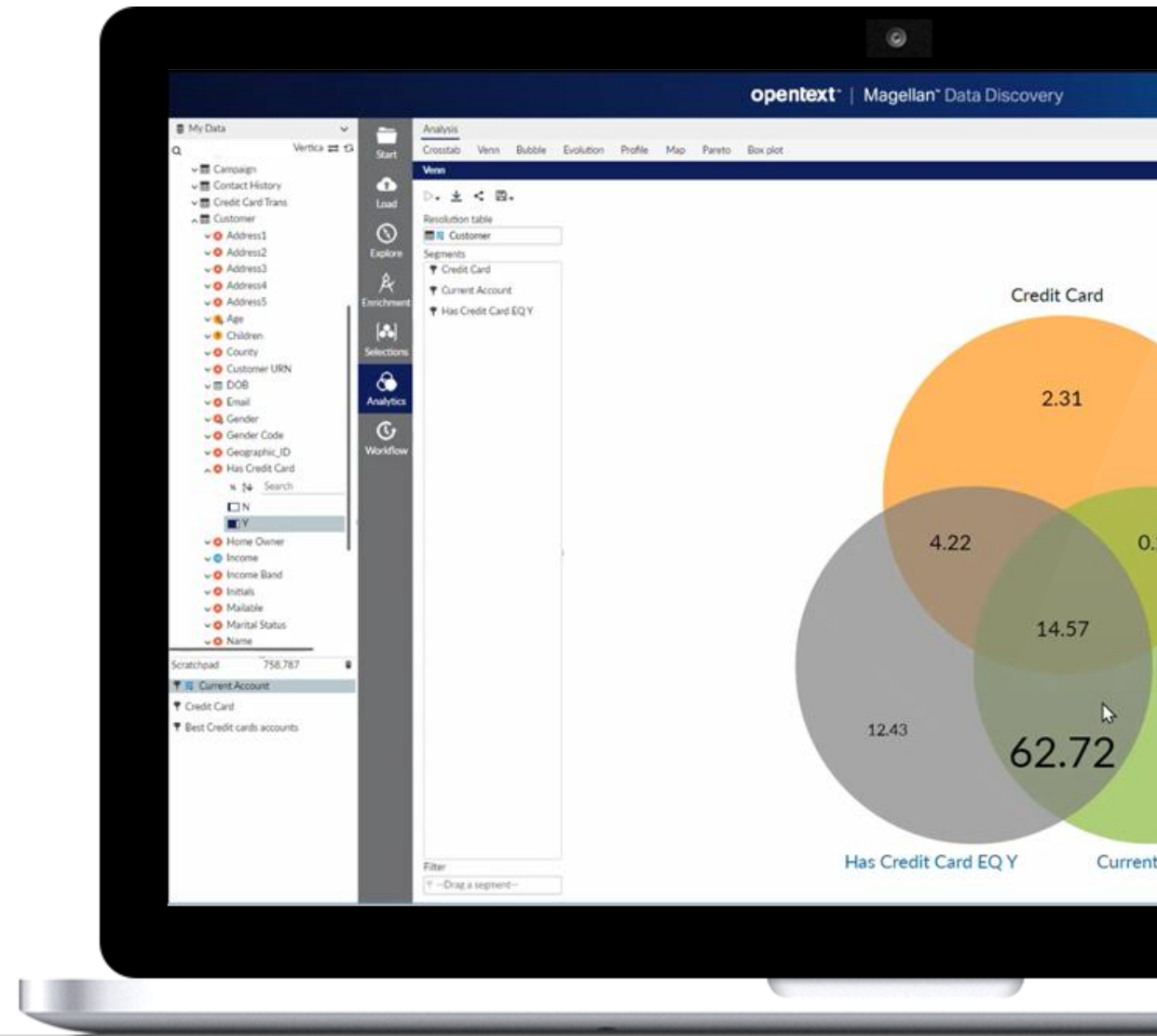
OpenText Intelligence Aviator: Your data's new best friend

- **Get immediate insights** through friendly conversational BI OpenText Aviator user interface
- **Reduce bottleneck** with no need for special skills to create reports and dashboards – Just Ask!
- **Explore data quickly** with suggested analysis and visualization based on the underlying data
- **Increase application value** with custom OpenText Intelligence Aviator based on your application data
- **Address ad-hoc business questions** with timeliness, precision, and trust



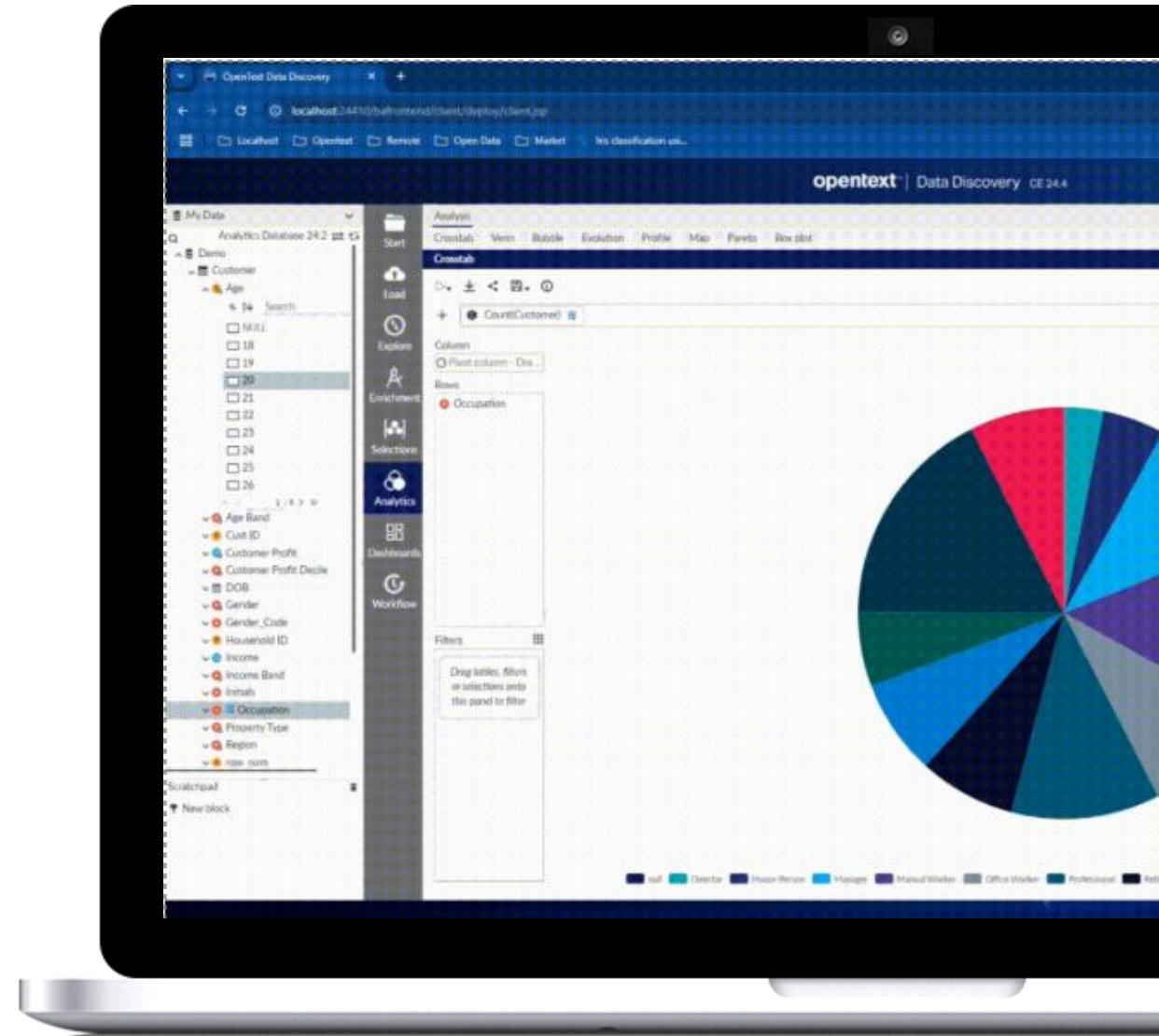
Unleash the power of OpenText Analytics Database data

- **Access** and ingest data directly with your instance of OpenText Analytics Database (Vertica)
- **Blend**, transform and create new tables and fields
- **Explore** data insights with drag drop simplicity
- **Analyze** data with no special query skills or IT involvement
- **Visualize** business insights with pre-built algorithms, analysis, and smart visualizations
- **Address ad-hoc business questions** to reveal hidden relationships, patterns, profiles, and trends.



Seamless Upgrades, Faster Performance and Smarter Data Management

- Perform upgrades with **zero downtime**
- **Save time and effort** with effortless PostgreSQL data integration and synchronization
- **Increase query performance and efficiency** with smarter, faster depot population
- **Accelerate insights** with powerful data exploration, cataloging, and analysis using Data Discovery



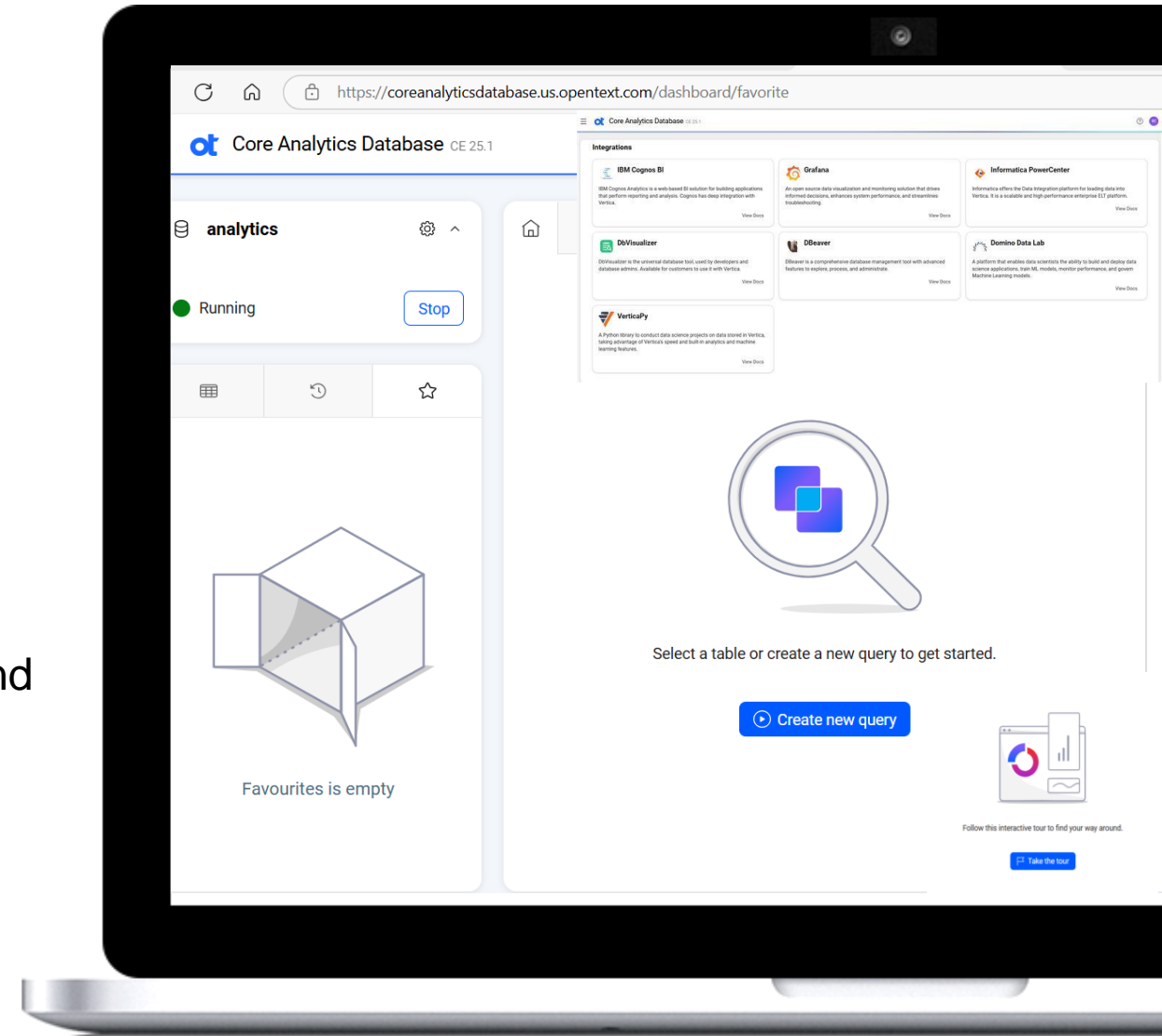
Smarter Scaling, Stronger Resilience, and Seamless Data Access

- **Optimize scaling** with Kubernetes auto-scaler for greater performance and flexibility
- Ensure disaster recovery and **business continuity** with in-database backup to other locations/cloud
- **Gain deeper insights** from Iceberg Metastore data using REST APIs
- Enjoy more efficient storage and processing with **variable length data**



Effortless scalability, performance, and security in the cloud

- Navigate seamlessly with an **improved UI** for intuitive analysis
- Easily create, configure, schedule, and monitor **data pipelines**
- Save time and effort with **auto-scaling** based on CPU and memory thresholds.
- Strengthen security and **reduce unauthorized access** with CIDR configuration



Intelligent reporting with intuitive UI & GenAI-powered insights

- Modernize and enhance your **report authoring experience** with the improved and intuitive self-service, drag and drop interface
- Gain valuable insights and make smarter decisions with **Generative AI-driven conversational queries** in OpenText Intelligence Aviator. Effortlessly embed Aviator into any application using REST APIs.

