

OpenText Core Software Delivery Platform

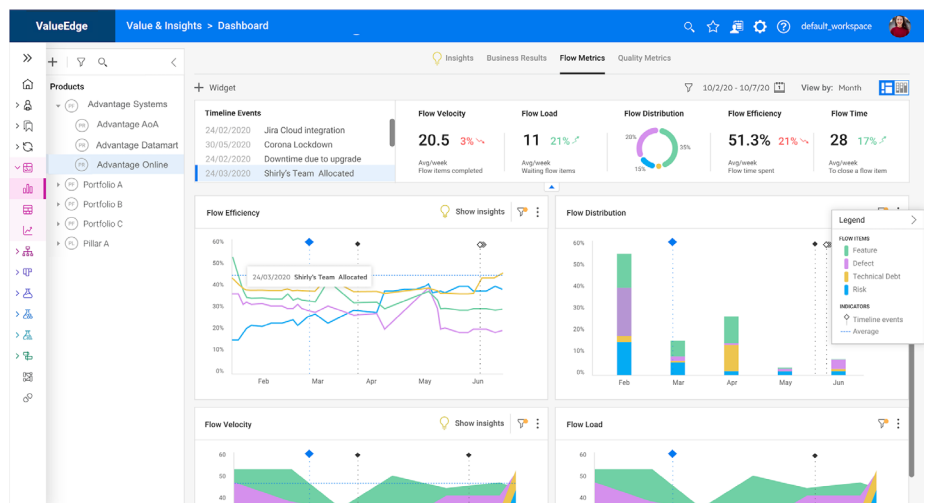
The OpenText DevOps and value stream management platform is a cloud-based, AI-driven, end-to-end solution that enables IT and software development organizations to visualize, track and manage value delivery across the digital product lifecycle.

Enable Digital Transformation with a Forward-Looking, Future Proofed Solution

- **Insights and Analytics**—Role-based dashboard with customizable widgets and graphs for value stream traversing with alerts and actions based on open analytics (API, SDK, OData).
- **DevOps Management and Orchestration**—Strategic portfolio management along with agile and quality management combined with testing for performance, functional and security, release management, and Operations management across the application lifecycle.
- **AI Engine**—a metric-based framework that provides trends, statistics, and benchmarks that are based on Machine Learning for correlations, anomaly detection, and advanced analytics that are driven by NLP (natural language processing), deep learning, and OCR (optical character recognition).
- **Federated Data Fabric**—a shared data lake provides for a common data model that provides value stream query language.
- **Extensible Ecosystem**—extendible connector provides for flexible integration and model alignment, with over 100+ pre-built commercial and open-source integrations that include Jira, Visual Studio, ServiceNow, Azure DevOps, along with many, many others.

OpenText Core Software Delivery Platform Highlights

OpenText™ Core Software Delivery Platform provides a comprehensive view of your entire digital software lifecycle—from concept to release. This solution delivers and quantifies the value of any feature, product, or service. Optimize value streams across business and IT functions and facilitate alignment from strategy to delivery.



The OpenText Core Software Delivery Platform is a modular, flexible solution designed to work seamlessly with your existing software toolchain environment. An intuitive and unified user interface and cloud-based managed services will ensure an easy deployment in any organization. Whether you begin with only a single OpenText Core Software Delivery Platform module or leverage multiple modules, quickly and easily augment your software development environment for maximum impact.

Digital Transformation with OpenText

- **Maximize business value**—adopt the right strategy, specify the right features, and maximize resource investments, business ROI, and customer satisfaction.
- **Early risk identification**—identify process slow down and get alerts of high load and downstream process delays before they occur.
- **Increase productivity**—flag inefficiencies, waste and flow in your software development and testing process and learn about waste.
- **Predictable SDLC process**—leverage trend and data behavior to predict time to market, delivery velocity, and identify patterns that can impact development throughput.
- **Continuous quality**—measure and understand drivers and points of risk which can impact product quality in a continuous fashion.

Key Features

- **End-to-end value stream management**—OpenText Core Software Delivery Platform empowers organizational product delivery processes, from strategy to delivery, enabling organizations to optimize value delivery, maximize efficiency, bolster quality, and minimize risk.
- **Cloud architecture**—OpenText Core Software Delivery Platform costeffective, flexible, secure design enables rapid deployment and seamless scalability to address the needs of the most demanding software teams.
- **Intelligent, advanced analytics**—Realtime, actionable insight via a customizable, intuitive interface so users can predict and take action to optimize application delivery.

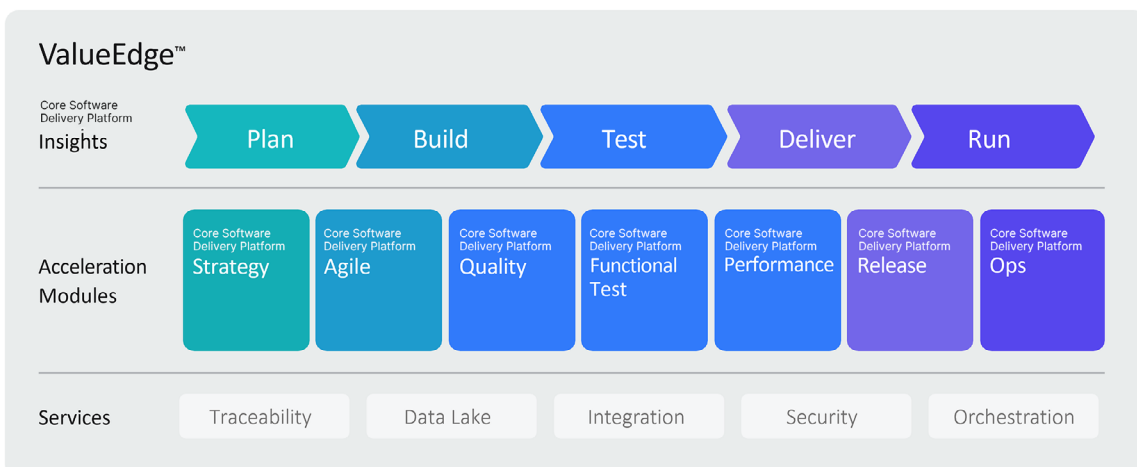
- **Continuous quality**—Deliver enterpriseclass levels of software quality with ValueEdge’s state-of-the-art end-to-end traceability and automated workflow processes.
- **Functional testing**—Extensive nextgeneration testing capabilities including model-based testing, access to physical mobile devices and emulators, and test run optimization.
- **Easily incorporate performance engineering** into your SDLC with a flexible testing model and a reduced need for managing and maintaining infrastructure.
- **Ease of integration**—Over 100 purposebuilt application integrations enable ease of use with an organization’s existing open-source or commercial software development toolchains.
- **AI-powered automation**—Effortlessly automate repetitive yet essential software delivery processes to maximize velocity and value delivery.

Modules

Insights—Easily measure and manage flow efficiency and effectiveness across your enterprise. AI-powered analytics provide instant insight into your development velocity, project duration, and quality levels. Now you can speed up your time to market by stopping bottlenecks before they happen.

Strategy—Manage and unify your enterprise-wide product strategy to align with your business needs. By defining and monitoring critical KPIs, you can use what-if scenarios to prioritize the best mix of deliverables versus investments. Lean portfolio management techniques help you make better scheduling decisions, incorporating risk exposure and resource limitations.

Agile—Deliver continuous value to your customers by enhancing and managing value streams. This module works with your Agile and DevOps methods to design, manage, and optimize software delivery. Implement industry-standard frameworks to achieve consistent delivery and gain full traceability across diverse, decentralized teams—all while harnessing intelligent automation at scale.



Quality—Track the ongoing health of your application via centralizing testing from a single point of visibility and control. This module helps you manage manual and automated continuous testing to improve consistency and coverage, eliminate redundant efforts with test reuse, versioning for test cases, and analyze quality levels to concentrate testing efforts.

Functional Test—These capabilities include business-centric model-based testing, codeless test authoring and execution, and a digital testing lab for any execution on any host, mobile device or browser. Increase confidence in your product deliverables by testing earlier and faster, reducing the number of defects and misaligned deliverables by leveraging codeless quality.

Performance—Leverage enterprise-grade performance testing capabilities to ensure the scalability and security of your business applications, gain insights for developers and performance engineers with intelligent analytics and integrate with a broad array of DevOps and application performance monitoring tools.

Release—Design and manage product delivery, from code change to production deployment. Ensure secure software governance and compliance requirements are met, manage all aspects of code change and review, perform continuous integration builds, capture, govern artifacts, and provision critical IT infrastructure as needed.

Ops—Measure the value of product changes with modern enterprise service management capabilities, service monitoring, and governed infrastructure as code. An easy-to-use self-service portal enables you to deliver enterprise-class operations in the data center and the cloud.

Easily Integrate with Your Organization’s Existing Tools

OpenText Core Software Delivery Platform features over 100 pre-built commercial and open-source integrations so you can leverage your existing software development tool environment without disruption or delay. This flexible, open approach brings together and enhances the technologies software development teams need to work optimally. You can also expand integrations to applications of your choice by using ValueEdge’s REST API, OData, and SDKs.

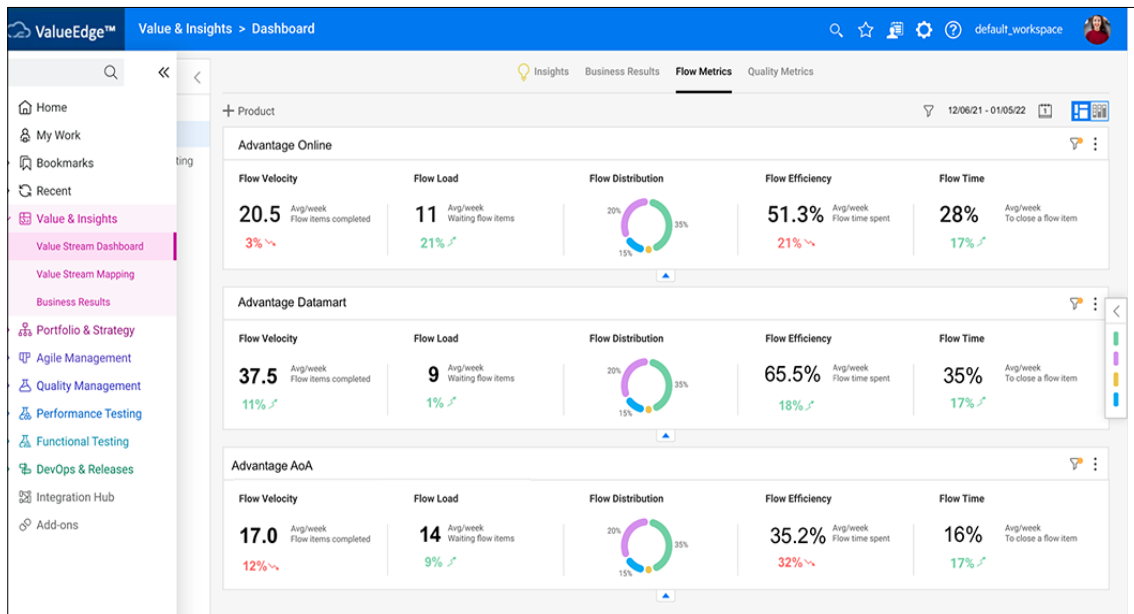
Key Benefits

Plan, build and seamlessly deliver digital product value streams to align your business objectives with your development resources to maximize business value and effectiveness. With the OpenText Core Software Delivery Platform value stream platform your organization will gain benefits in the following areas:

Strategic Portfolio Management—simplify the management and execution of key business goals, objectives, and results:

- Capture, define and prioritize business demand and changes through a single, enterprise-scale management solution.
- Document strategic goals, plan and track investments, manage programs, govern digital products, and realize desired business outcomes that align with key strategic business objectives.
- Visualize strategy alignment, roadmap value, risk and investment guardrails in the customizable portfolio dashboard to prioritize the best mix of investments.

Category	Supported Integrations Include:
Developer Environments	Visual Studio, Eclipse, IntelliJ
Agile Planning	Jira
Source Code Management	Git, GitHub, Subversion
CI Servers	Jenkins, Bamboo, TeamCity, Azure DevOps, GoCD, GitLab
Containers	Docker, Kubernetes, Swarm
Open-Source Test Automation	Gatling, JMeter, Junit, Nunit, Selenium
Asset Management	ServiceNow, BMC
Vulnerabilities and Code Coverage	Fortify, SonarQube, Jacoco, LCOV
Collaboration	Slack, Microsoft Teams



Agile and DevOps Management—support project and product teams who are undertaking or extending their Agile and DevOps transformations:

- Team and Enterprise level Agile support across many methodologies, from Scrum to Scaled Agile Framework (SAFe) and many others.
- Fully integrated Agile capabilities augment existing tools and products.
- Support the delivery of high-value change across multiple product teams and technologies.

Test and Quality Management—Increase product quality, stability, and risk through:

- Delivering highly focused Functional and Performance Test activities, governed, and tracked from a single point of visibility and control.
- Track and improve the ongoing health of products and releases using real-time data feeds to reduce risks and increase customer product satisfaction.

Code, CI, CD, and Release Management—Accelerate product line delivery and action Agile change by:

- Using industry-standard Git-based version control, continuous integration builds, artifact capture and management, continuous delivery, and release processes.
- Understand the bottlenecks, friction, and process inhibitors across development and operations teams to simplify the delivery of high-value change.

Moving to Cloud—reduce costs, improve efficiency, and take steps toward moving product delivery to the cloud:

- Gain efficiencies with a modular, cloud-based platform for end-to-end insights on SLDC.
- Identify opportunities to modernize your application portfolio and decide what to keep, change, or retire.

Learn more at

[OpenText Core Software Delivery Platform](https://www.microfocus.com/opentext)
www.microfocus.com/opentext