

opentext™

Eight myths about the LoadRunner family

Innovate and deliver value with
LoadRunner solutions



You've invested in LoadRunner solutions to deliver high-performing applications.

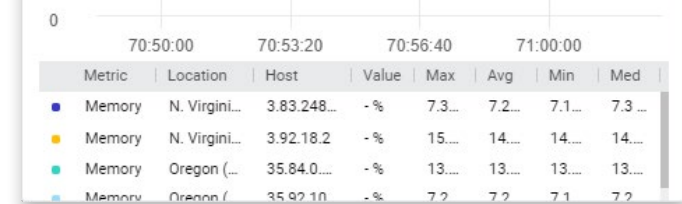
Do you have all the facts?

More than 25 years ago, we entered the performance engineering world with what you now know as the OpenText™ LoadRunner™ family of solutions. We have been innovating performance testing ever since and continue to be an industry leader.

With increasing industry pressure to rapidly release software, we launched an enterprise solution, followed by extending the LoadRunner platform to deliver a cloud solution.

We've received a lot of positive feedback on the LoadRunner family, but there are numerous negative claims that are simply not true.

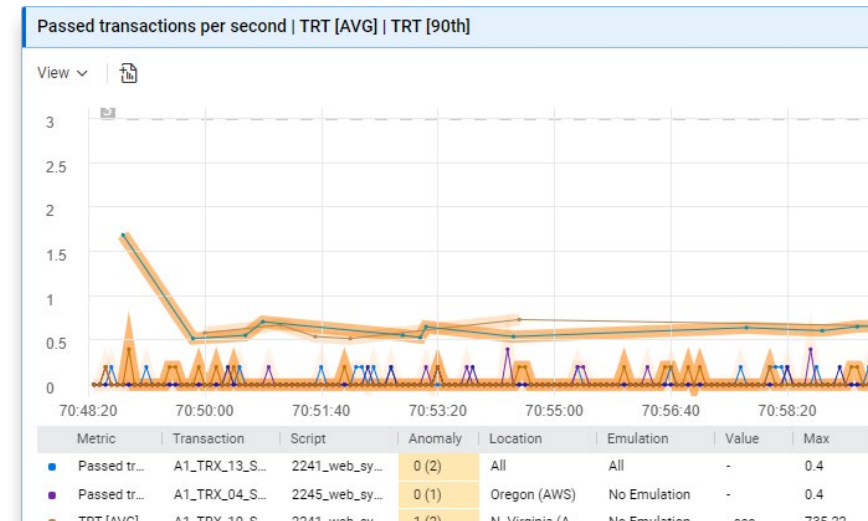
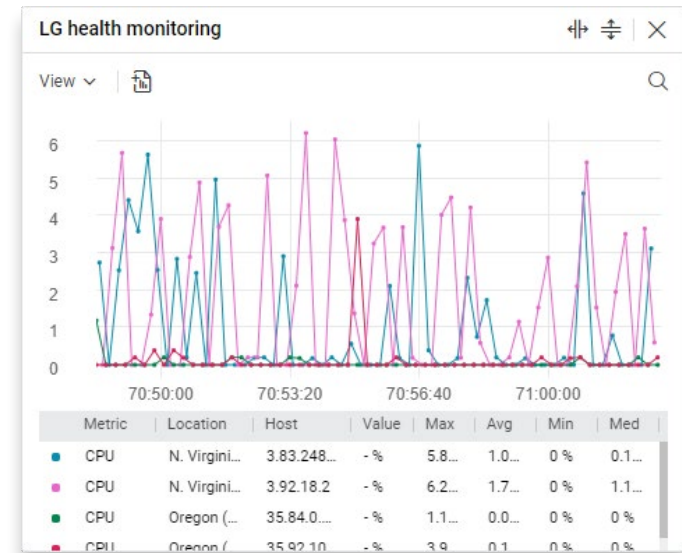
This ebook outlines eight common myths and shines a light on recent innovations you should bear in mind when using or considering LoadRunner solutions.



Metric	Location	Host	Value	Max	Avg	Min	Med
Memory	N. Virgini...	3.83.248...	-%	7.3...	7.2...	7.1...	7.3...
Memory	N. Virgini...	3.92.18.2	-%	15...	14...	14...	14...
Memory	Oregon (...)	35.84.0...	-%	13...	13...	13...	13...
Memory	Oregon (...)	35.92.10	-%	7.2	7.2	7.1	7.2



Date	Start time	Duration	Planned WEB Users
10/10/2022	15:32	73:02:44	115



LoadRunner family myths

Myth 1

Scripting is complicated with LoadRunner solutions ›

Myth 2

LoadRunner solutions do not fully integrate with continuous testing ›

Myth 3

It takes too long to set up a test with LoadRunner solutions ›

Myth 4

LoadRunner solutions are not 100-percent open source compatible ›

Myth 5

LoadRunner family testing tools are not suited for every team member ›

Myth 6

LoadRunner solutions are difficult to scale ›

Myth 7

LoadRunner solutions do not have comprehensive analytics ›

Myth 8

LoadRunner solutions are outdated ›

Myth 1

Scripting is complicated with LoadRunner solutions.

“OpenText LoadRunner Enterprise helped us overcome debugging and scripting challenges. It has enabled us to manage projects. We have a place where we can put our results and scripts. It has streamlined our testing process. The tool has improved productivity and result quality.”

Gopal Bansal
Advisor
Fiserv

[Read the full review on PeerSpot >](#)

“LoadRunner should be recognized as the best solution in game performance testing... We're confident that the reliability of the results we get from LoadRunner is second to none.”

Kim Byung Su
CEO
Ntrance Corp

Fact

Scripting is a core focus of our performance testing solutions.

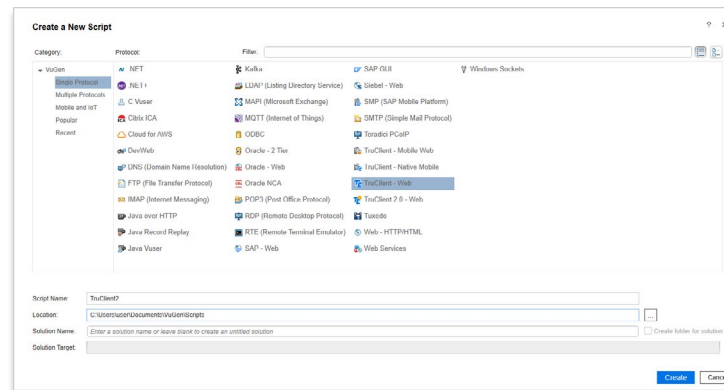
Scripts help your users simulate a business process and how real users will interact with the application they are testing. Over the years, we've created new protocols to make scripting simpler, easier to maintain, and generally faster. Our online editor records your actions as you navigate through your business process, creating a script in real time, allowing you to see the steps you complete in a sidebar.

With VuGen, (Virtual User Generator), you can easily create, record, correlate, replay, and enhance scripts for more effective load testing. VuGen assets are reusable with all LoadRunner solutions, which minimizes script and scenario duplication.

When creating DevWeb scripts (which are pure JavaScript), you can record, script, and execute load tests in your favorite IDE as part of the continuous testing process.

Reduce scripting time and gain simple, intuitive control of your scripts using the JavaScript SDK. The ability for native string manipulation and asynchronous pattern handling lets you reuse code from the application.

The DevWeb script can then be shared and run natively on any LoadRunner solution. DevWeb connects all project stakeholders at different testing stages to the continuous performance testing process.



Create a script with VuGen

Learn how Ntrance saves one month per testing cycle by simplifying test script creation, management, execution, and monitoring.

[Read the case study >](#)

Learn how you can replay a VuGen script using the MDRV process.

[Watch the video >](#)

Learn more about using VuGen.

[Get more information >](#)

Myth 2

LoadRunner solutions do not fully integrate with continuous testing.

“LoadRunner Enterprise was the only solution on the market that could cater to our technical requirements—and even though we’ve evaluated other solutions since, LoadRunner Enterprise remains the clear leader.”

Aditya Kattamuri
Assistant Manager, ITSM Test & QA
Discount Tire

“LoadRunner Professional gave us a robust performance testing framework with industry-leading, in-built capabilities. We found we could enter all our client activity, merge our interactions into one master performance testing scenario, and replicate from there.”

Pranay Agarwal
SRE & Performance Lead
PointsBet Australia

Fact

LoadRunner solutions extensive integrations enable continuous testing.

User experience plays a significant role during short development cycles, frequent releases, and changing market needs. You need quality standards throughout the SDLC. Continuous testing and performance engineering enable users to build all the necessary performance metrics from the initial design.

We’ve been working with our customers to include performance testing as part of their pipelines. Broadening the integration of performance into the CI/CD process helps you balance and prioritize responsibilities across developers, testers, and performance engineers. However, integrating with today’s complex toolchains and getting developers involved in the process isn’t a simple feat. You need an open approach that brings together and enhances the technologies DevOps and Agile teams need to test their way.

Extensive integrations enable continuous testing.

OpenText	Monitoring	CI/CD	Containers	IDES
ALM Octane ALM/Quality Center UFT One UFT Digital Lab Silk Performer Silk Test RUM SiteScope ValueEdge™	AppDynamics Dynatrace New Relic Splunk Broadcom APM Datadog Prometheus Azure Application Insights Amazon CloudWatch	Jenkins Bamboo TeamCity Azure DevOps AWS CodePipeline GitHub Actions	Docker Kubernetes Swarm	Visual Studio Eclipse IntelliJ
Open Source Test Automation	Cloud Providers	Source Code Management	Data Visualization	
Gatling JMeter JUnit NUnit Selenium	Amazon Web Services (AWS) Azure Google Cloud	Git GitHub	Grafana InfluxDB	

*Marks are proprietary of their respective owners. Not all integrations are supported across all products.

LoadRunner solutions have dozens of built-in integrations across IDE, CI/CD, open source, monitoring, and source-code management tools:

- **IDE integrations:** Eclipse, IntelliJ, Visual Studio.
- **CI/CD integrations:** AWS CodePipeline, Azure DevOps, Bamboo, GitHub Actions, Jenkins, Team City.
- **Open source integrations:** Gatling, JMeter, JUnit, NUnit, Selenium.
- **Monitoring integrations:** AppDynamics, Amazon CloudWatch, Azure Application Insights, Broadcom APM, Datadog, and more.
- **SCM integrations:** Git and GitHub.

The LoadRunner family embraces an open approach to your broader ecosystem with extensive integrations to enable continuous testing. Additionally, our products are now open by exposing REST APIs so that tests can be executed from any solution.

Learn how PointsBet enables continuous development and through GitHub integration.

[Read the case study ›](#)

Learn more about the LoadRunner family.

[Read the brochure ›](#)

Myth 3

It takes too long to set up a test with LoadRunner solutions.

“It’s a fast product, so you don’t have much trouble in terms of maintenance overhead. You don’t want to just look into configuring load generators, look for upgrades, and end up having that take up a lot of your time.”

Vinod Patil
Senior Manager, Performance Architect
Publicis Sapient

[Read the full review on PeerSpot >](#)

“Using LoadRunner Enterprise we deliver higher quality applications in a well-sized environment, fit for purpose. Our users really appreciate this, and our go-live experience has improved immensely.”

Wolfram Wagner
Expert System Engineer Performance
Endress+Hauser InfoServe

Fact

The LoadRunner family offers flexible options to enable quick testing.

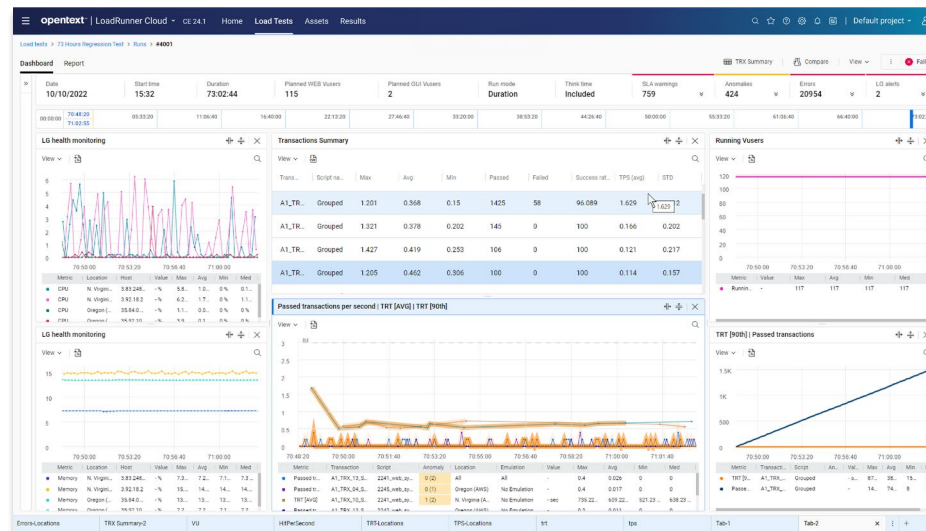
Set up and run tests in minutes with a 100-percent cloud-based solution that eliminates infrastructure management. [LoadRunner Cloud](#) automatically creates tests on demand.

Seamlessly leverage public cloud infrastructure to deploy load generators (LGs). Scale up and down based on your performance testing needs.

With cloud testing, you can quickly and elastically scale up tests to meet the demands of your customer-facing business applications, reducing the cost and overhead of managing dedicated machines.

You can also build a collaborative environment and share a common infrastructure. Execute multiple performance tests concurrently and continuously and share all relevant assets to test more quickly and deliver faster results.

Plugins for continuous integration provide a mechanism for executing performance tests as part of a build. Additionally, users can synchronize tests from YAML files saved in a Git repository and create tests from YAML input, allowing them to run tests quickly.



LoadRunner Cloud

Learn how Endress+Hauser InfoServe gained more effective team collaboration and greater user satisfaction.

[Read the case study >](#)

What is load testing?

[View the web page >](#)

Myth 4

LoadRunner solutions are not 100-percent open source compatible.

Fact

LoadRunner solutions support common open source tools.

JMeter, Gatling, Selenium, JUnit, and NUnit script reuse are all open source tools that LoadRunner solutions support. You can execute the scripts these tools generate without converting or adjusting them. We want our users to bring existing assets, such as functional scripts, and reuse them in a performance test to save time.

The LoadRunner Family embraces different testing tools for scripting, complemented by advanced execution and analytics capabilities.

Automation support improves coverage and allows test teams to work with tools they are familiar with. LoadRunner solutions support many common open source solutions. They not only work in conjunction with open source tools but also enhance them. The LoadRunner family helps speed up test efforts by maximizing these resources and reusing assets.



Open source tools supported in LoadRunner.

“Our DevOps initiatives, leveraging Micro Focus (now part of OpenText) automated testing solutions, are helping us be more innovative and much more responsive to evolving customer requirements. We deliver new applications and updates faster, with fewer errors, and at lower cost.”

Senior Testing Engineer
Large UK Financial Services Company

Learn more about the benefits of using LoadRunner solutions with open source tools.

[Read the case study >](#)

Learn how to integrate open source and commercial tools into your DevOps pipeline.

[Read the ebook >](#)

Myth 5

LoadRunner family testing tools are not suited for every team member.

Fact

Developers, QA, testers, and performance engineers can easily use LoadRunner tools.

LoadRunner solutions are for every team member, expanding performance testing to new roles. They offer different user interfaces and tools to involve different personas in performance testing efforts.

In fact, these tools break down silos and enable teams to collaborate closely. Using LoadRunner solutions, anyone can reuse assets and share comprehensive real-time analytics, keeping everyone connected.

OpenText Performance Engineering solutions include [LoadRunner Developer](#) for developers, TruClient for less experienced scripters, VuGen for performance

engineers, [LoadRunner Professional](#) for co-located teams, [LoadRunner Enterprise](#) for distributed teams, and LoadRunner Cloud, which facilitates cloud testing. All products have features and capabilities that enable different personas to use the tools and their skills.

Performance engineering teams work together from start to finish:

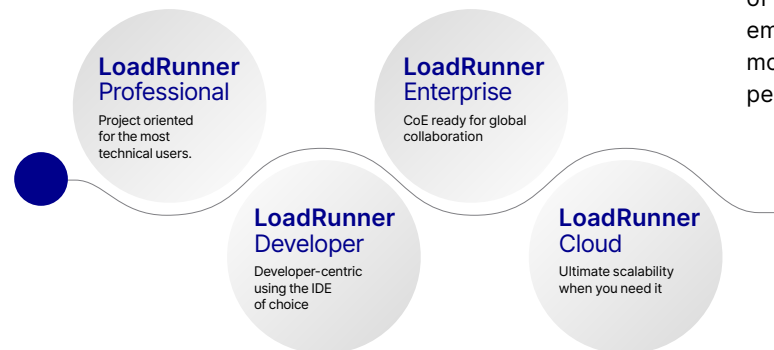
- Developers script, model scenarios, run tests, and quickly analyze the results—without leaving their usual developer ecosystem.
- Developers and dev testers engage in performance engineering earlier. This involvement provides the early feedback needed to deliver applications faster, with less risk and higher quality.
- Engineers and testers share resources and results in real time, such as advanced scheduling, simulation of real-world scenarios, superior execution, network emulation from different geographic locations, and more detailed analytics that help isolate and identify performance issues before release.

“LoadRunner Developer’s shift-left process is becoming more and more important for us. It’s a newer initiative for Costco. We are pushing towards it. We already have teams that have started doing lower-level performance testing.”

Luke Steinmetzer
System Administrator
Costco Wholesale

[Read the full review on PeerSpot >](#)

LoadRunner family



Learn how performance engineering enables DevOps.

[Read the ebook >](#)

Learn how to leverage shift-left testing into your performance engineering with LoadRunner solutions.

[Read the ebook >](#)

Myth 6

LoadRunner solutions are difficult to scale.

As part of our LoadRunner testing, we went as high as 50,000 concurrent users, so we have now moved some of our bigger test suites onto LoadRunner Cloud.”

Vivek Koul
Performance Engineering Manager
McGraw-Hill

“Micro Focus (now part of OpenText) LoadRunner Enterprise SaaS works well for us because of its flexibility. We could start with a limited number of users and expand as needed. There’s no big capital expense, and we can charge services back to the bottlers.”

Andrei Semenov
Senior Manager PMO and Enablement
CONA Services, LLC

Fact

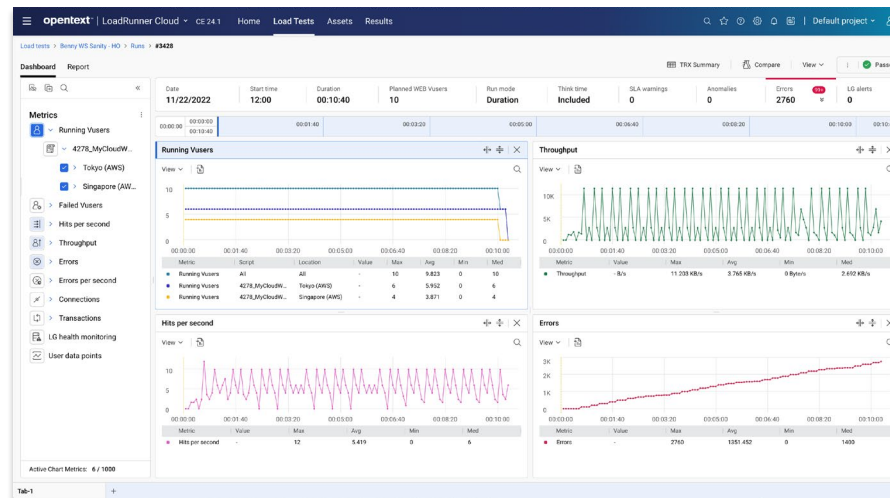
LoadRunner solutions deliver a flexible and scalable approach to infrastructure, licensing, and workloads.

LoadRunner Cloud is designed to handle massive scale. No additional hardware required. Test applications with more than five million virtual users from geographic locations around the world—all in a matter of minutes.

When using LoadRunner solutions, you pick the deployment option that works best for you and minimize infrastructure needs with options spanning on-premises, Docker containers, Software as a Service (SaaS), or load generators provisioned in the cloud.

If you have a subscription with public cloud providers (Amazon Web Services, Google Cloud Platform, or Microsoft Azure), LoadRunner Enterprise offers these options as well. You can dynamically provision hosts on demand without having to manage complex infrastructures.

Load generator flexibility across the entire LoadRunner family helps you to scale. Several capabilities—including OneLG, a combined installer for on-premises load generators—helps you flexibly scale up or down without a lot of extra work.



LoadRunner Cloud

Coke One North America (CONA) scales users and loads without service interruption.

[Read the case study >](#)

Think beyond Black Friday! Be ready for anything, anytime, and anywhere.

[Read the ebook >](#)

Interested in moving to the cloud?

[Read the brief >](#)

Myth 7

LoadRunner solutions do not have comprehensive analytics.

“With LoadRunner Enterprise, we run tests much faster than before and have introduced a change-driven approach, where we test what we need, reducing engineering time. We arrive in the morning to comprehensive test reports and can quickly determine the success of our testing efforts.”

Colin Griffiths
Performance Engineering Manager
Sky

Fact

Your teams can leverage automated and graphical analysis to help isolate the root cause and use data visualization to make smarter decisions.

The LoadRunner family empowers your teams with data visualization capabilities, enabling them to view data, manipulate it, and then make the right decision.

Automated and graphical analysis can significantly reduce the time you spend analyzing data. Ultimately, you want to identify problems faster and use predictive analytics to help understand anomalies and problems in real time. Easily interpret the test results to identify the performance profile of the application, and then determine the mitigation options with intuitive analytics.

During the graphical analysis process, you can:

- Capture valuable metrics on how the application behaves under different virtual user loads.
- Compare multiple metrics from both the same and old tests runs.
- Compare existing test run to a benchmark.
- Get real-time results and enhanced data visualization with Grafana and InfluxDB.

Did you know that LoadRunner solutions offer visibility into the test status across the entire enterprise? They also provide performance trending information across multiple tests. You can define a baseline and set up reports. These capabilities help you quickly see how the application performance trends over subsequent iterations and performs against defined SLAs. With detailed root cause analysis, users can get test data displayed both in real time and offline. The online and offline analysis capabilities aid in trending and anomaly detection.

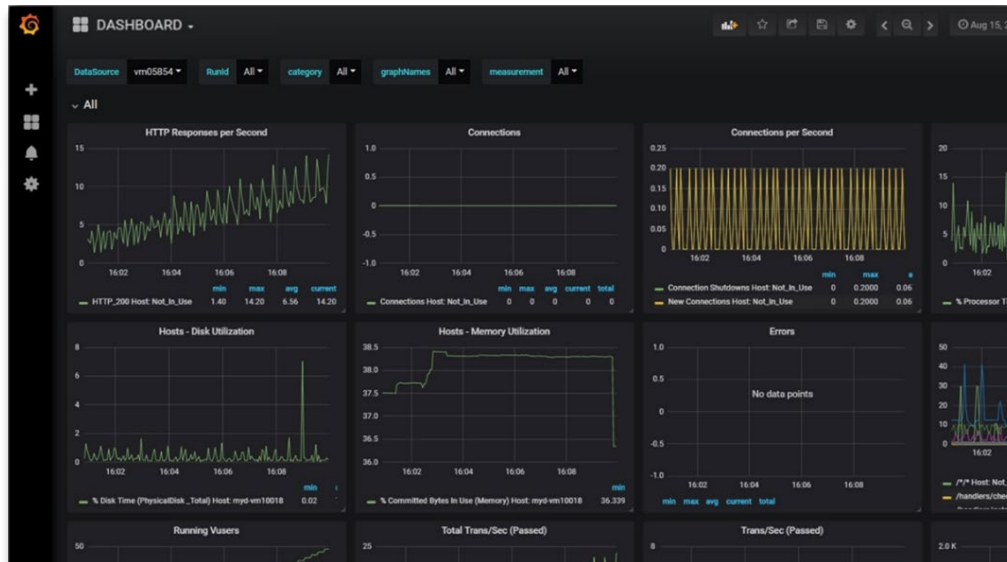
Comprehensive analytics allow you to:

- Compare the current run with a previous run or to the test benchmark.
- View network breakdown metrics and transaction summaries.
- Create different dashboard layouts for different stakeholders who may access the test.
- Create a convenient configuration of your graphs based on your own needs.
- Overall, manage data better and organize metrics for easier manipulation.

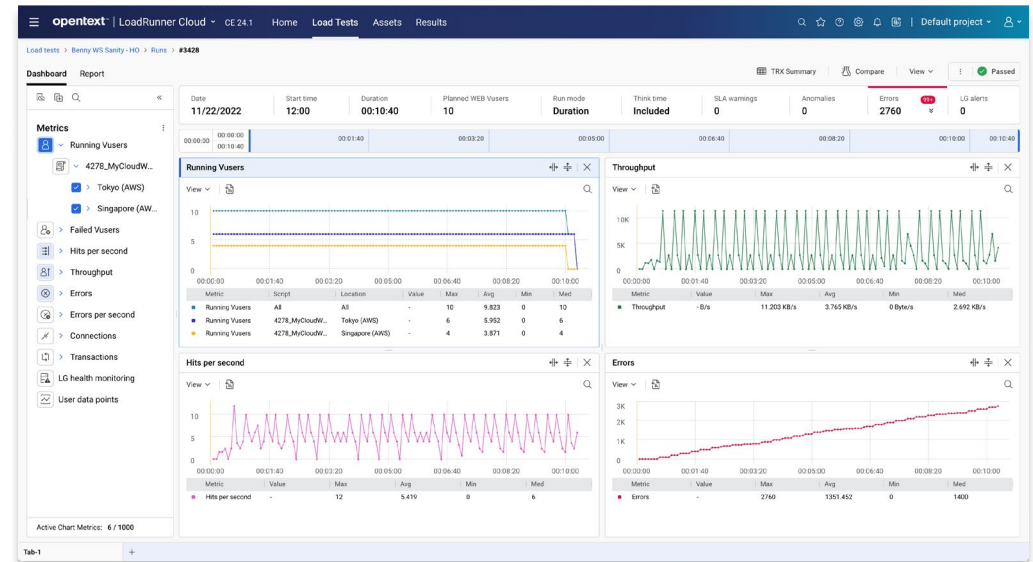
Sky achieved 95% automated end-to-end performance testing.

[Read the case study ›](#)

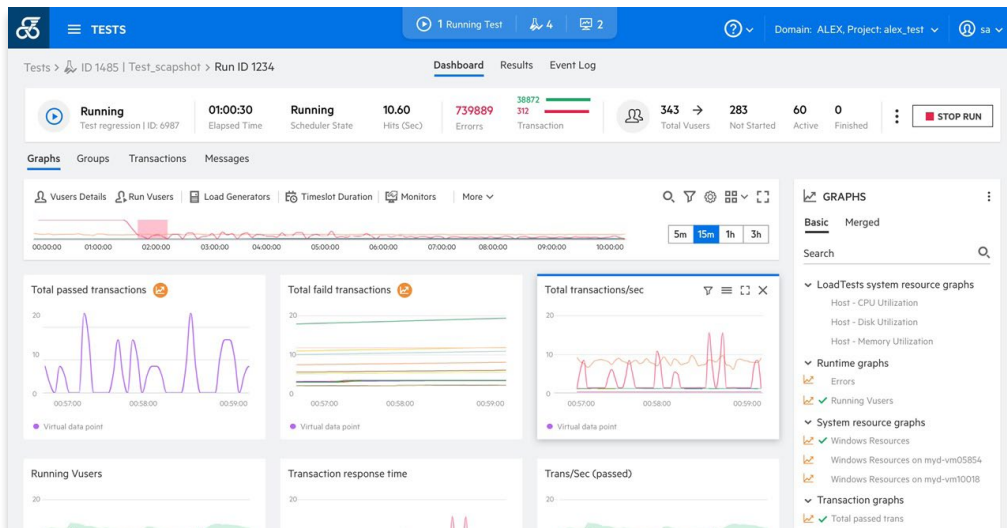
Comprehensive analytics and data visualization across the LoadRunner family.



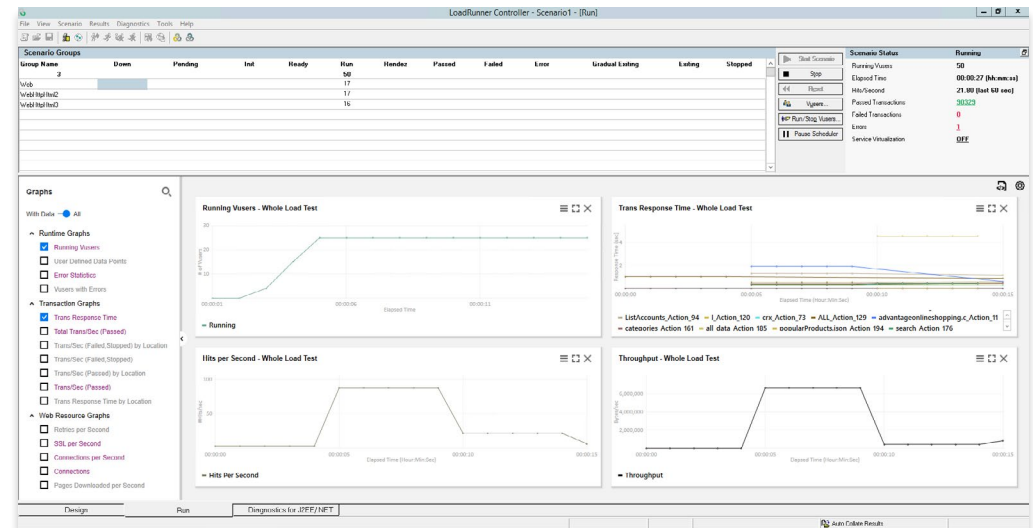
Comprehensive analytics—Grafana reporting



LoadRunner Cloud dashboard



LoadRunner Enterprise dashboard



LoadRunner Professional controller

Myth 8

LoadRunner solutions are outdated.

“Our DevOps initiatives, leveraging Micro Focus (now part of OpenText) automated testing solutions, are helping us be more innovative and much more responsive to evolving customer requirements. We deliver new applications and updates faster, with fewer errors, and at lower cost.”

Senior Testing Engineer
Large UK Financial Services Company

Fact

LoadRunner family continues to innovate with regular releases.

To ensure that all solutions are up to your expectations, we continually enhance LoadRunner solutions. Our 100-percent cloud solution brings new capabilities to market every nine weeks, while our on-premises and collaborative solutions offer enhancements on a quarterly basis.

Recent innovations include a streamlined architecture and modernized controller for ease of use, an improved user experience for VuGen, and additional analysis reports. Continual enhancements improve scripting from TruClient browser updates and client-side measurements to DevWeb enhancements.

The LoadRunner family does not just deliver a load testing solution, it also delivers a complete performance engineering solution. Continued innovation and expanded integration through consistent releases ensure our support for third-party and open source tools stay updated. These ongoing features and enhancements, as well as an open architecture, allows LoadRunner solutions to evolve.

We hope this ebook has helped clear up any myths about the LoadRunner family being outdated. Meet the needs of your DevOps teams by integrating with CI/CD pipeline engines, IDE tools for shift-left testing, APM, and support for open source tools.

LoadRunner family

Network	Oracle E-business	SAP	Mobile and IoT	Templates
DNS FTP IMAP LDAP MAPI POP3 Tuxedo Winsock	DevWeb JMeter Gatling Oracle NCA Oracle—Web Siebel—Web Web—HTTP/HTML	SAP GUI SAP—Web SMP—(SAP Mobile Platform)	MQTT CoAP TruClient—Mobile JMeter Gatling Web—HTTP/HTML Dev/Web	C# Vuser C++ .NET C# .NET Java Vuser VB.Net
GUI	SOA	Database	Java	Development
Unified Functional Testing (UFT)	UFT API Web Services	ODBC Oracle—2 Tier	Java Record Replay Java over HTTP Kafka	SDK Unit Test—JUnit, JUnit Selenium, UFT Developer
Rich Internet Applications	.NET Record & Replay	Remote Access	Remote Desktop	
Selenium TruClient—Mobile Web TruClient—Web	Microsoft .NET .NET+	Citrix RTD PCoIP	Microsoft RDP (Remote Desktop Protocol)	

*Not all protocols are supported across all products.

Performance Engineering with
the LoadRunner Family.

[Watch the video >](#)

What's New in the
LoadRunner Family.

[View the lookbook >](#)

Now that you have a better understanding of LoadRunner family innovations, let us help you adopt the latest version or move to the cloud.

Take advantage of recent enhancements that enable smarter insights and tighter collaboration. LoadRunner solutions also help your organization build a performance engineering practice that scales.

Feel free to share this with colleagues who need help separating fact from fiction when it comes to the LoadRunner family.

Interested in learning more about the LoadRunner family?



[Explore the benefits and capabilities >](#)



[Read about the latest innovations >](#)



[Get help with your LoadRunner solution >](#)



[Select a trial or request a demo >](#)

Run mode	Think time	SLA warnings	Anomalies	Errors	LG alerts
Duration	Included	759	424	20954	2

